

Table of Contents

Chapter I	Introduction	1
1.1	Features	1
1.2	System Requirements	1
Chapter II	Installation&Uninstallation	2
2.1	Installation	2
2.2	Uninstallation	2
Chapter III	How to Run LedStudio	4
3.1	LedStudio Interface	4
3.2	LedStudio Menus	9
3.2.1	File Menu.....	9
3.2.1.1	New	9
3.2.1.2	Open	9
3.2.1.3	Save	9
3.2.1.4	Save as	9
3.2.1.5	Open Demo File	9
3.2.1.6	Open recent files	10
3.2.1.7	Logoff	10
3.2.1.8	Exit	10
3.2.2	Control Menu.....	11
3.2.2.1	Play	11
3.2.2.2	Play Last	11
3.2.2.3	Play Next	11
3.2.2.4	Pause	11
3.2.2.5	Stop	11
3.2.2.6	Notify	11
3.2.2.7	Score Manager	12
3.2.2.8	Play PowerPoint File	14
3.2.2.9	Stop PowerPoint File	14

3.2.2.10	Play VCD/DVD	14
3.2.2.11	Backup Program	14
3.2.2.12	Manager for LED Screen Sever	14
3.2.3	Tool Menu.....	15
3.2.4	Option Menu.....	15
3.2.4.1	Screen Combination/synchronism	15
3.2.4.2	Set Screen Brightness/ Contrast/ Color	18
3.2.4.3	Screen Area	19
3.2.4.4	Play background/foreground	21
1.	How to enable Play Background	21
2.	How to exit Play Background mode:	22
3.2.4.5	Lock/Unlock LED Screen Properties	22
3.2.4.6	Turn on/off LED Screen power	23
3.2.4.7	Schedule Table	23
3.2.4.8	Schedule Hide Setup	29
3.2.4.9	Language	30
3.2.4.10	Hide/Show Play Window	31
3.2.4.11	LED Screen Monitor	32
3.2.4.12	Hardware Setup	37
3.2.4.13	Software Setup	38
3.2.4.13.1	Play Window	39
3.2.4.13.1.1	Lock to LED Screen	41
3.2.4.13.1.2	Floating	42
3.2.4.13.1.3	Multi-LED Combination/synchronism	42
3.2.4.13.2	Auto	44
3.2.4.13.3	Networking	45
3.2.4.13.3.1	Online/real time remote control	46
3.2.4.13.3.2	FTP Server	52
3.2.4.13.3.3	Play Manager	56
3.2.4.13.4	Other	58

3. 2. 4. 14 User Setup	59
3. 3. 5 Test Menu	60
3. 3. 5. 1 Grey Test1	61
3. 3. 5. 2 Grey Test1	61
3. 3. 5. 3 Grid Test	61
3. 3. 5. 4 Dot Test	62
3. 3. 5. 5 Color Bar Test	62
3. 3. 5. 6 Color Bar Test2	63
3. 3. 5. 7 Check Position	63
3. 3. 5.8 Check Color	63
3. 3. 6 Help Menu	64
3. 3. 6. 1 Help	64
3. 3. 6. 2 Knowledge	64
3. 3. 6. 3 Check IP Address	64
3. 3. 6. 4 About LedStudio	64
3. 3. 6. 5 Play File List	65
3. 3 How to make a .lsd file	66
3. 3. 1 Setup Playing Window	66
3. 3. 2 Open a New Page of Program	67
3. 3. 2. 1 Add Step, Add Universal Display	67
3. 3. 2. 2 Step Settings	68
3. 3. 2. 3 Universal Display Settings	68
3. 3. 3 Add New Window	69
3. 3. 3. 0 Important Notes:	71
3. 3. 3. 1 File Window	73
3. 3. 3. 1.1 File(s) Showing Area Settings	73
3. 3. 3. 1.2 File(s) Adding & Listing Window	73
3. 3. 3. 1.3 File Playing Settings	74
3.3.3.1.3.1 Photo Playing Settings	74
3.3.3.1.3.2 Video Playing Settings	75

3. 3. 3. 2 Text Window	76
3. 3. 3. 3 Single Line Text Window	78
3. 3. 3. 4 Static Text Window	79
3. 3. 3. 5 Table Window	80
3. 3. 3. 6 Timer Window	82
3. 3. 3. 7 Database Window	85
Table Properties	86
Column Properties	88
3. 3. 3. 8 VCD/DVD Window	90
3. 3. 3. 9 External Exe Window	91
3. 3. 3. 10 Video Window	92
3. 3. 3. 11 Date/Time Window	93
3. 3. 3. 12 Terperature/Humidity Window	95
3. 3. 3. 13 Copy Window	96
3. 4. 4 Save Program	96
3. 4. 5 Play Program	96

ChapterI Introduction

1.1 Features

LedStudio is LED Display management software for Linsn LED Display Control System.

LedStudio functions in two ways:

To setup Linsn LED Display Control System;

To edit and play programs on LED Display.

Supported media file formats:

Document: .txt .doc etc.

Photo: .BMP .JPG .GIF .PCX .PNG etc.

Video: .MPG .MPEG .MPV .MPA .AVI .VCD .SWF .RM .RA .RMJ .ASF etc.

1.2 System Requirements

- Microsoft Windows XP/Windows Vista/Windows 7
- 1024*768 display (or higher)
- 64MB of Disk Space
- A DVI-D port provided by Graphics Card or Motherboard
- A USB port

ChapterII Installation&Uninstallation

2. 1 Installation

Follow the following steps to install and run LedStudio.

1. Download LedStudio from <http://www.linsn.com/LED/LEDStudio10.exe> or get from the CD-Disk.



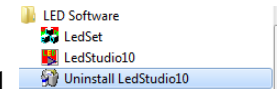
2. Double-click the LEDStudio.exe and flowing on-screen instruction to finish installation.




3. LedStudio program shortcut ICON on desktop.

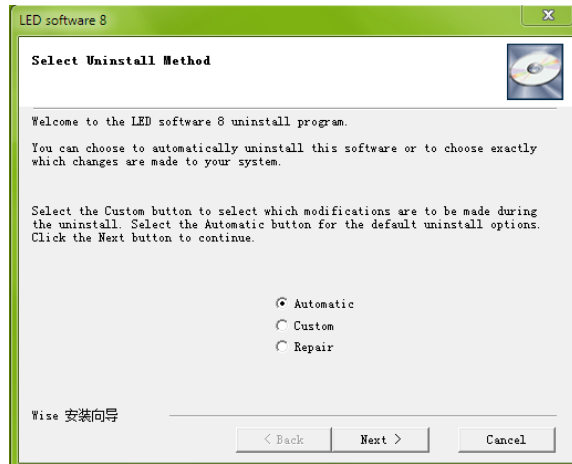
2. 2 Uninstallation

1. Click **Start** , find LedStudio folder, click Uninstall



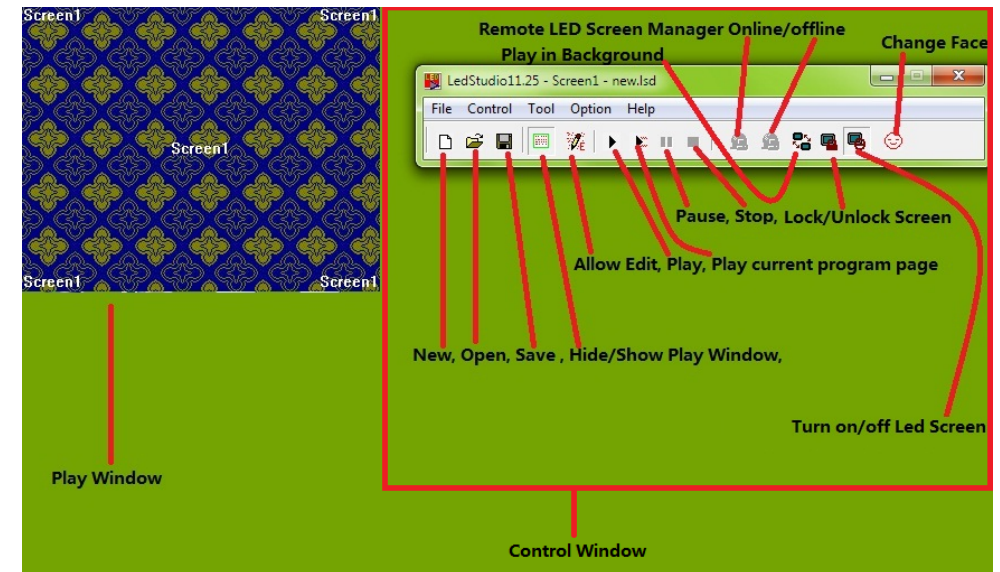
Or go to **Control Panel**, click  **Programs** **Uninstall a program**, find and select Led Software to **uninstall**

2. Select **Automatic**, click **Next** till finish uninstallation.

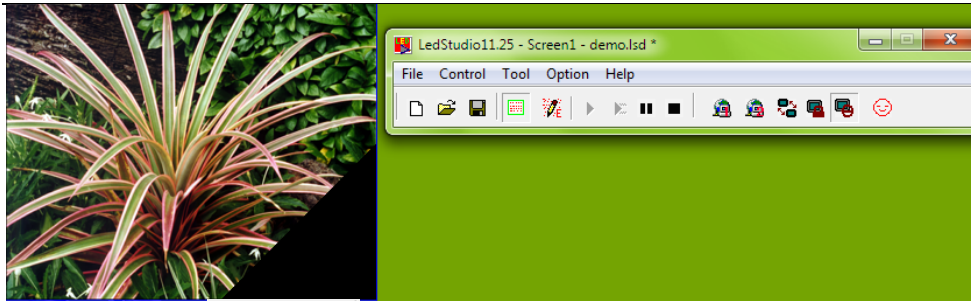


Chapter III How to Run LedStudio

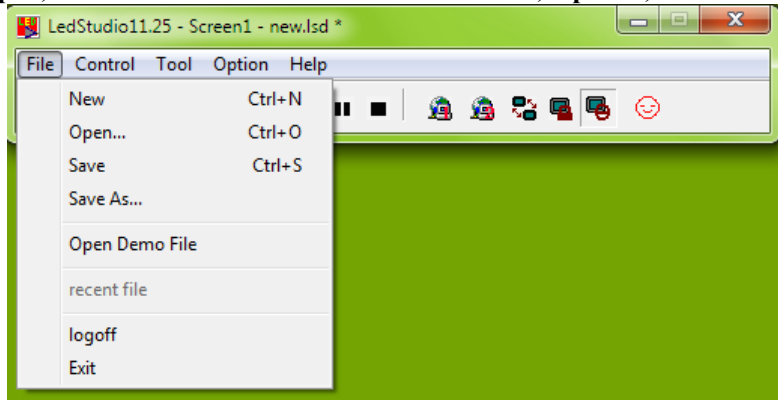
3.1 LedStudio Interface



Play Window: Simulated screen. Contents played by LedStudio show on Play Window.



New, Open, Save : Short-cut icons of New, Open..., Save in File Menu

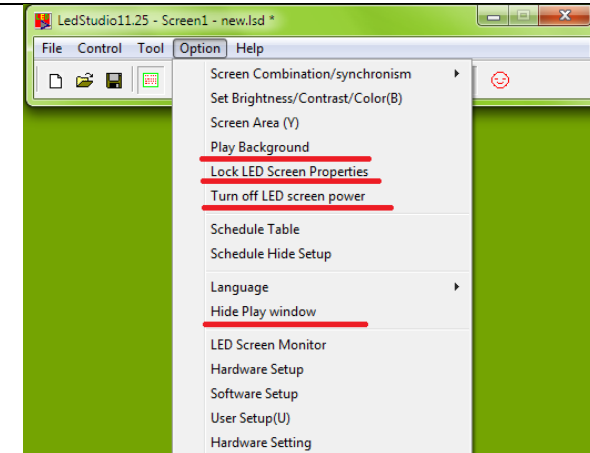


Hide/Show Play Window : short-cut icon of Hide/Show Play Window

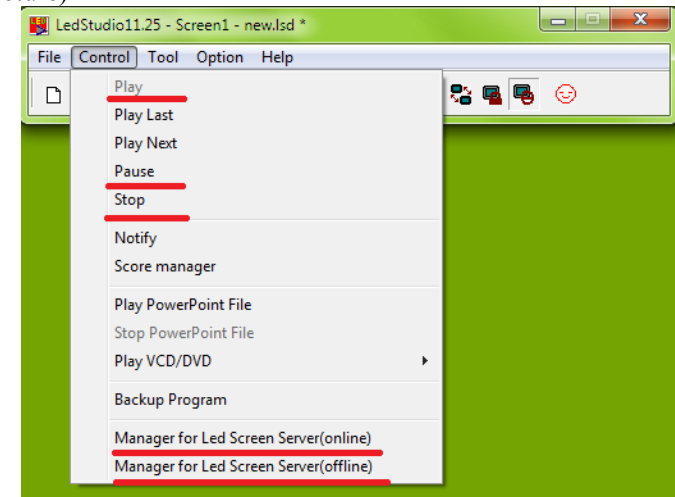
Lock/Unlock Screen Properties : short-cut icon of Lock/Unlock LED Screen Properties

Turn on/off Led Screen : short-cut icon of Turn on/off screen power

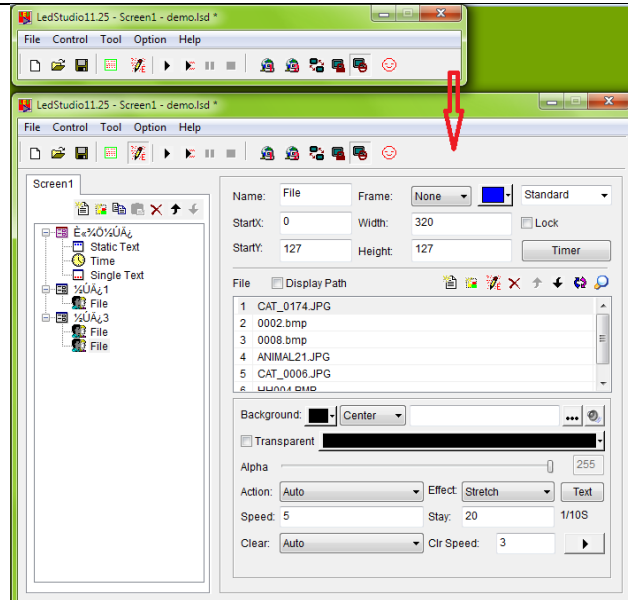
Play in Background : set the Graphic card in extended mode; work with Play background/foreground



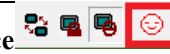
Play, Pause, Stop, Remote LED Screen Manager (online), Remote LED Screen Manager (offline) : short-cut icons from Control menu (see following picture)



Allow Edit : collapse/extend the edit window.

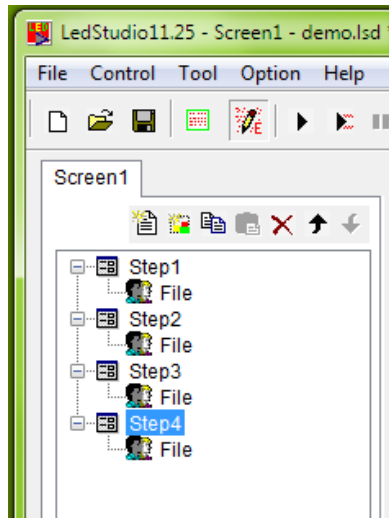


Change Face

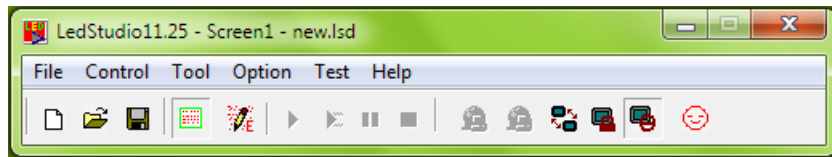


: change LedStudio appearance. Normally DO NOT Change Face.

Play Current Program Page: Start playing from the selected **Step**
For example, select **Step4**, and click **Play Current program page**, it means step4, then step1, then step2...

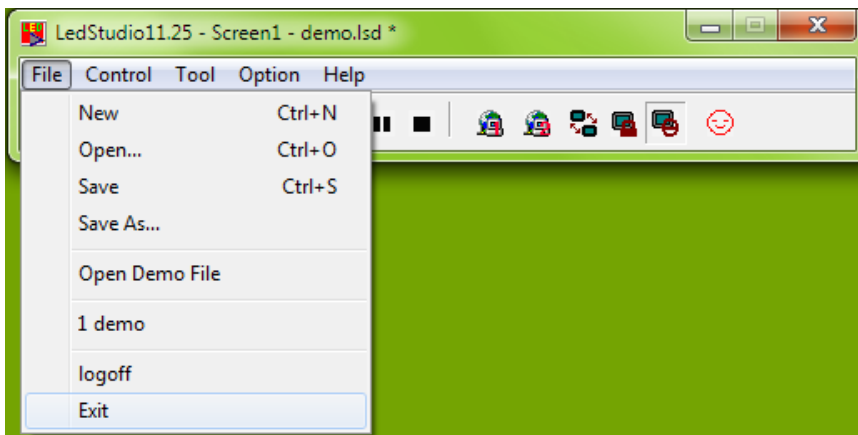


3. 2 LedStudio Menus



File Menu, Control Menu, Tool Menu, Option Menu, Test Menu and Help Menu

3. 2. 1 File Menu



3.2.1.1 New

New: create a new .lsd program file.

3.2.1.2 Open

Open: open an existed LedStudio program file (.lsd file).

3.2.1.3 Save

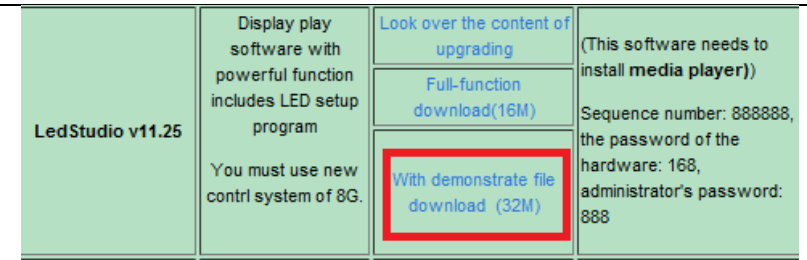
Save: save an .lsd file.

3.2.1.4 Save as

Save as: to save current program file as a new .lsd file.

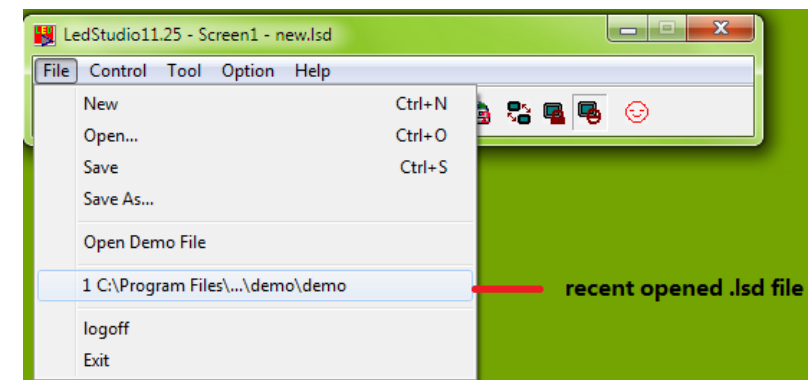
3.2.1.5 Open Demo File

Open Demo File: open LedStudio demo file (when downloading LedStudio software, choose the **With demonstration file** one)



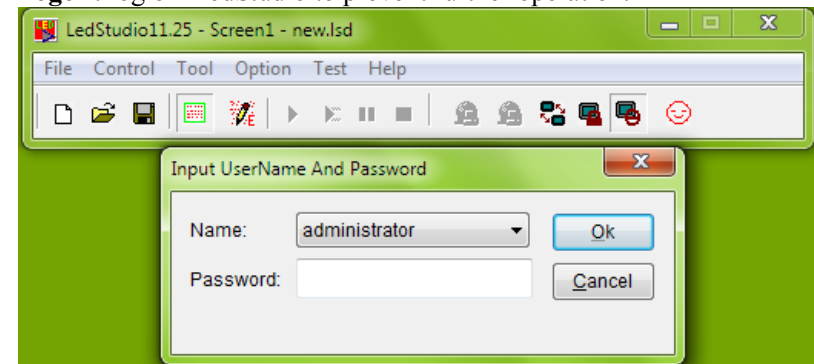
3.2.1.6 Open recent files

Open recent files: open the recently .lsd files.



3.2.1.7 Logoff

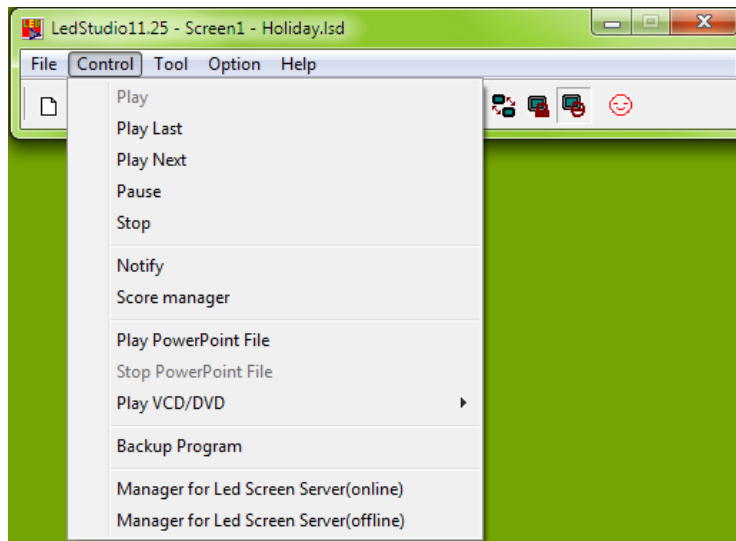
Logoff: log off LedStudio to prevent further operation.



3.2.1.8 Exit

Exit: exit LedStudio.

3. 2. 2 Control Menu



3.2.2.1 Play

Play: Start playing program file (step by step).

3.2.2.2 Play Last

Play last: play previous **Step**.

3.2.2.3 Play Next

Play next: play next **Step**.

3.2.2.4 Pause

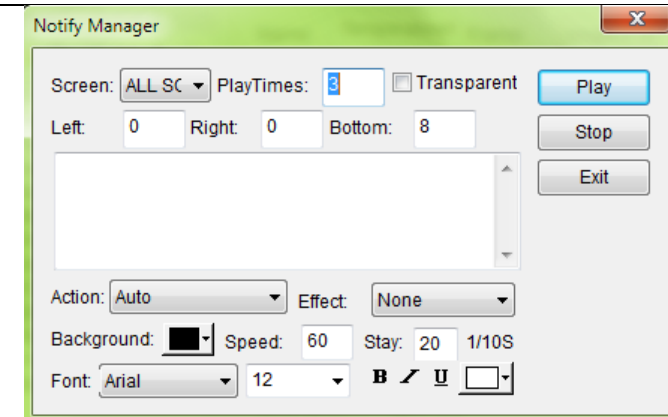
Pause: pause playing file.

3.2.2.5 Stop

Stop: stop playing.

3.2.2.6 Notify

Notify: insert notice, when ledstudio is playing programs.



Screen: choose which LED Screen to show Notify Message

Play time: Not yet put into use

Transparent: only work when **Background** color is Black. Transparent the black background color.

Left/Right/Bottom: adjust the Notify Message position

Play: start showing Notify Message

Stop: stop showing Notify Message

Action: how the Notify Message come into **Play Window**

Effect: Effects for Notify Message

Background: background color for Notify Message

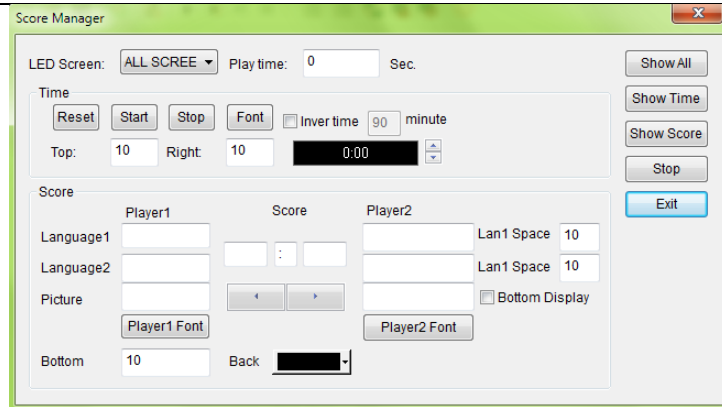
Speed: Notify Message coming in speed. The larger value, the slower speed

Stay: time duration for Notify Message to stay before next **Action** is taken place

Font: Font settings for Notify Message

3.2.2.7 Score Manager

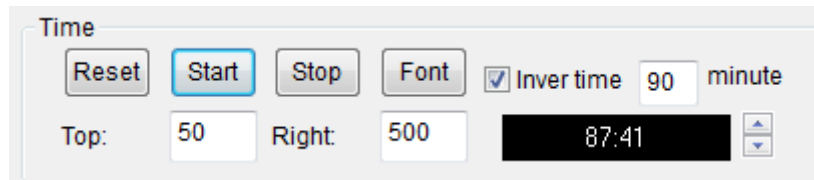
Score manager: display scores for competition games when ledstudio is playing programs.



LED Screen: choose which LED Screen to show the score

Play time: Not yet put into use

Show All: show time and show score



Reset: reset the time to count/countdown

Start: start counting/countdown time

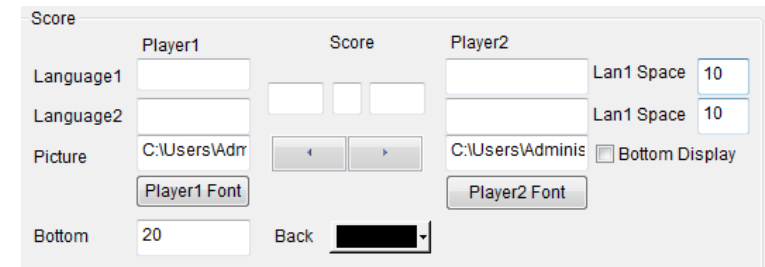
Stop: stop time counting/countdown

Font: font setting of time

Inver time: countdown

Minutes: time duration for count/countdown

Top/Right: set position of time



Score settings:

Player1: Team/Player name, in two languages

Player2: Team/Player name, in two languages

Score: input score

Lan1 Space: (language1) the distance of two players' names in showing

Lan2 Space: (language2) the distance of two players' names in showing

Picture: add pictures

Font: font settings

Bottom: set the position of score contents (player name, score)

Bottom display: display Team/player pictures below score.

3.2.2.8 Play PowerPoint File

Play Power point file: play PowerPoint file.

3.2.2.9 Stop PowerPoint File

Stop PowerPoint file: stop PowerPoint File.

3.2.2.10 Play VCD/DVD

Play VCD/DVD: play VCD/DVD in CD/DVD-ROM Drive.

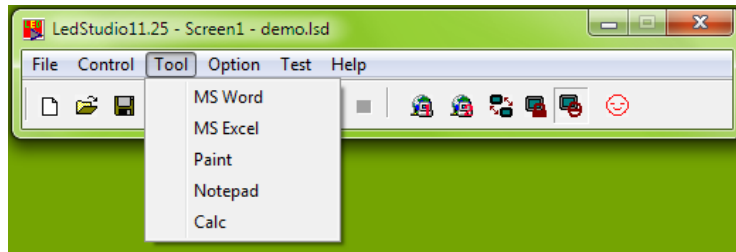
3.2.2.11 Backup Program

Backup program: backup all files of current program/.lsd file.

3.2.2.12 Manager for LED Screen Sever

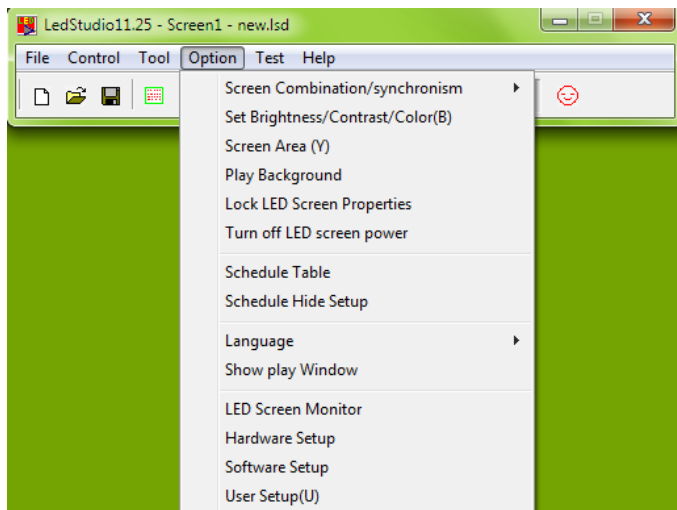
Manager for LED Screen Sever: to manage remote screen, please refer to Option Menu, Software Setup, [Networking](#) for details.

3. 2. 3 Tool Menu



Short-cuts of Microsoft Word, Excel, Paint, Notepad, Calculator. Click to open quickly.

3. 2. 4 Option Menu



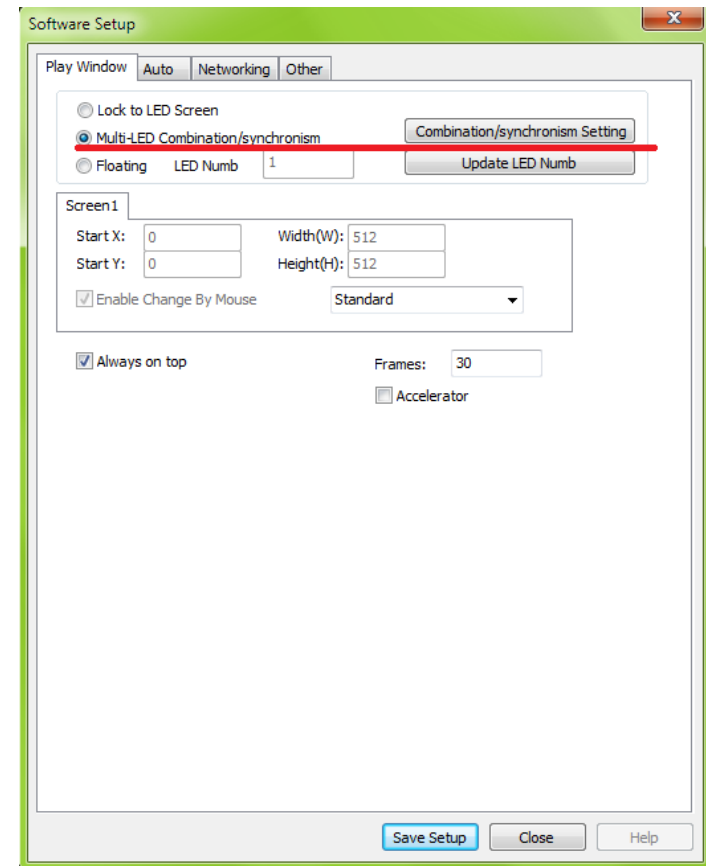
3. 2. 4. 1 Screen Combination/synchronism

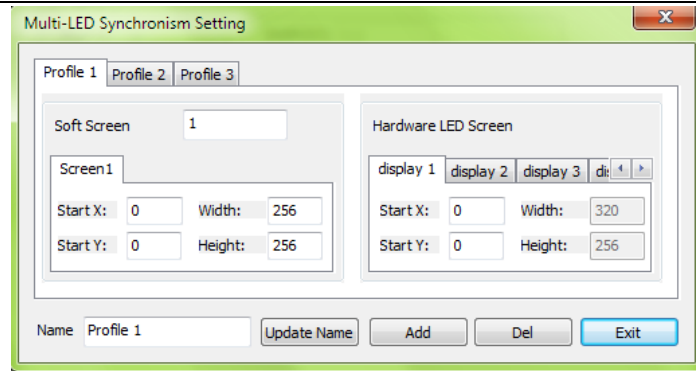
Screen Combination/synchronism: This is quick-Profiles-switch function.

First, Profile the led display combinations. When more than one led display is controlled by LedStudio, these led displays can be set as INDEPENDENT, CLONE,

SIDE BY SIDE to form A bigger led display, etc.

Go to **Software Setup**, select **Multi-LED Combination/synchronism**, Click **Combination/synchronism Setting**





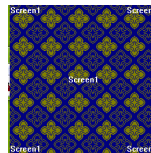
Name: Profile name

Update Name: change the Profile name and click update name to refresh

Add: add one Profile

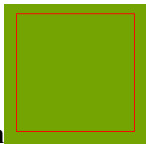
Del: delete the selected Profile

Exit: Exit **Combination/synchronism Setting**



Soft Screen: set numbers of **Play Window/Simulated Screen**

Hardware LED Screen: read the numbers of Led display from **Display**

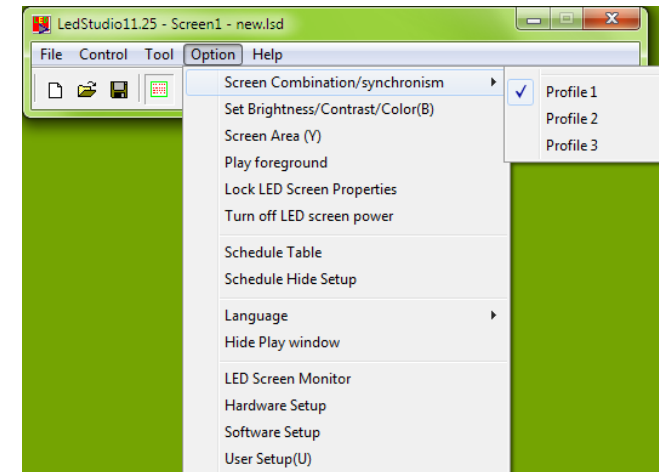


Connection (one **Red** rectangle means one **Hardware LED Screen**)

Start X: set the X position of (X, Y) coordination for the selected Soft Screen of Display

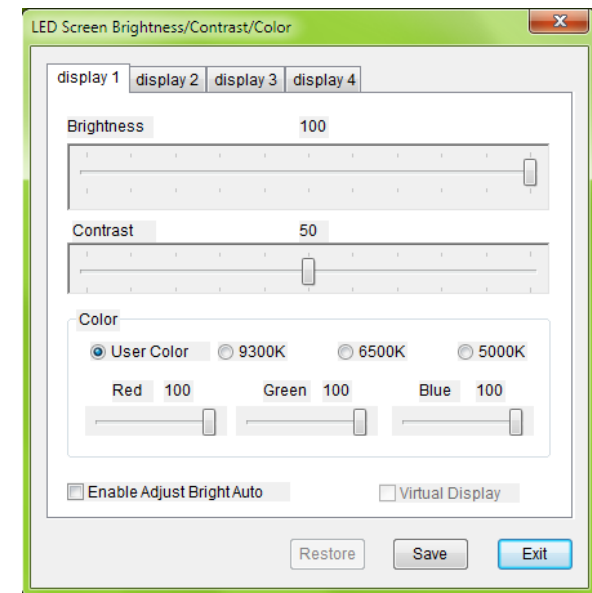
Start Y: set the Y position of (X, Y) coordination for the selected Soft Screen of Display

Now, the preset **Profiles** can be quickly switched.



3. 2. 4. 2 Set Screen Brightness/ Contrast/ Color

Screen Brightness/ Contrast/ Color: manually adjust the selected **Display** brightness, Contrast, Color



Brightness: 0-100, total 101grades manual brightness adjustment

Contrast: 0-100, total 101grades manual contrast adjustment

Color: User Color, each color of RGB has 0-100, total 101grades manual color adjustment; and three preset color choices.

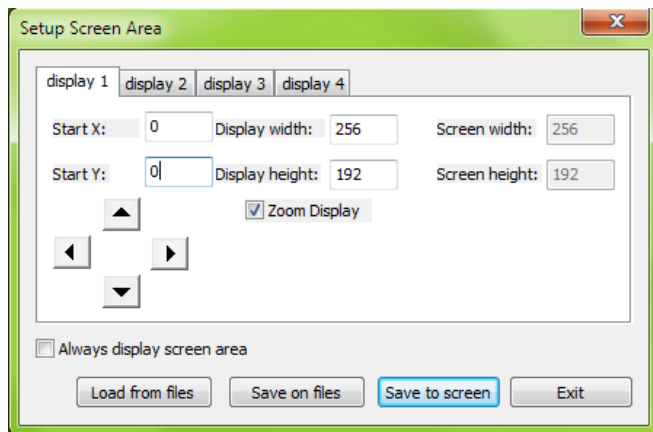
Enable Adjust Bright Auto: Enable if a Function Board is applied for automatic brightness adjustment

Virtual Display: switch between virtual and none-virtual mode for virtual led display. **Note:** For virtual led display, if **Virtual Display** does not enable, the virtual led display will be considered as real pixel led display, and only has 1/4 of visual size working. For example, a 384*256 virtual led display, will work as 192*128.

3. 2. 4. 3 Screen Area

Screen Area is the area copied to led display. Contents inside the Screen area will be copied to led display.

Note: if the **Screen Area** is gray color, go check [3.2.4.12 Hardware Setup Note](#)



Display1/Display2/Display3/Display4: led display name

Start X: set the X position of (X, Y) coordination for screen area

Start Y: set the Y position of (X, Y) coordination for screen area

The arrow icon: adjust the start X, start Y, by 1 pixel at a time.

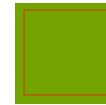
Display width: the selected led display width of **Play Window**

Display height: the selected led display height of **Play Window**

Screen width: the width of **selected led display**

Screen height: the height of **selected led display**

Always display screen area: enable this; the screen area/red rectangle



will be always visible.

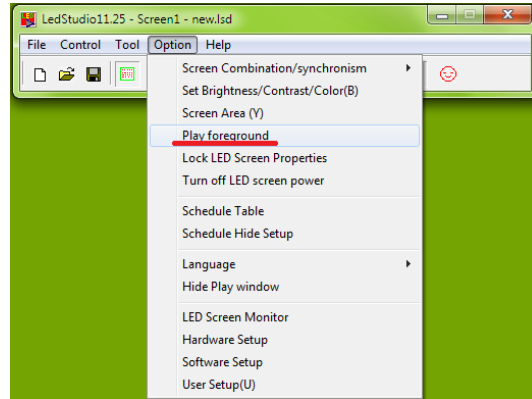
Zoom Display: enable Zoom Display, the Display width and Display height will change from **gray color to editable**.

Set the display width and display height **larger** than the screen width and screen height.

For example:

1. enable Zoom Display
2. set display width 300, and display height 300
3. disable Zoom Display, and enable Zoom Display again, the red rectangle is now 300, 300
4. Click save to screen, the 300, 300 red rectangle contents will be copied and resize to fit the led display of 256,192.

3. 2. 4. 4 Play background/foreground



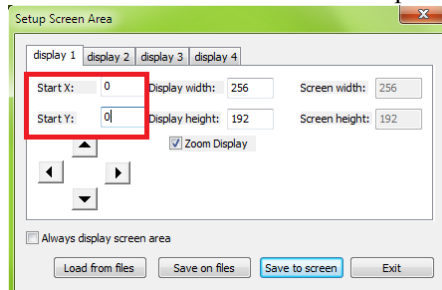
Play background/foreground play: Play background/foreground.

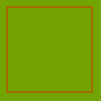
1. How to enable Play Background

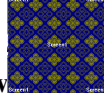
Take a 1280*768 computer monitor for example:

1. set the Graphic card in extended mode
2. execute foreground play/play foreground is to set the (X,Y) of Screen

Area  to the Start X and StartY of Screen Area preset setting.



3. Exit foreground play/Play background: set the (X,Y) of Screen Area  to

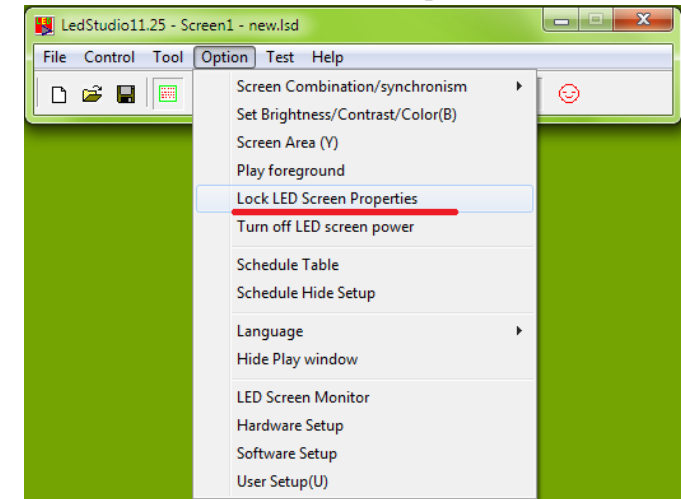
(1281,0). The **Play Window**  will not be seen in the computer monitor.

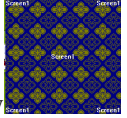
Important: when proceeding **Play Background**, choose **Floating** in Option Menu, Software setup, Play Window. If Lock to LED Screen is selected, Play Window cannot be moved.

2. How to exit Play Background mode:

1. cancel desktop extends to Monitor 2
2. reopen graphic card CLONE function

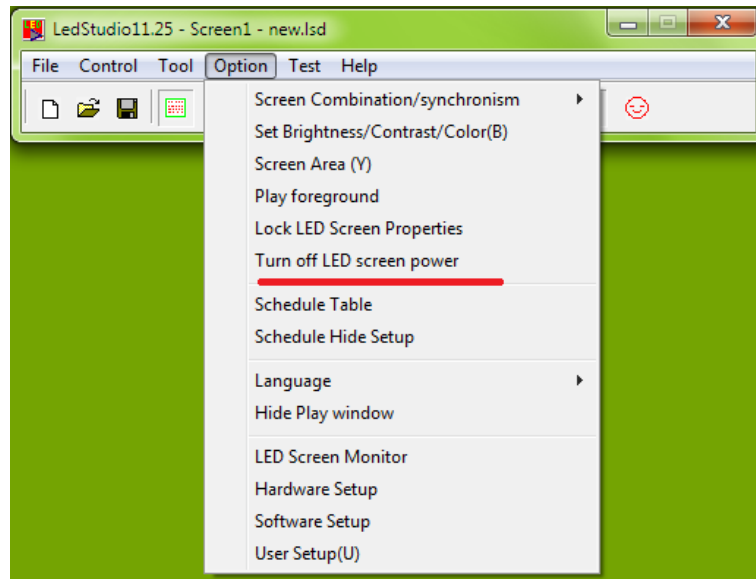
3. 2. 4. 5 Lock/Unlock LED Screen Properties



Lock: freeze-frame on led display, and **Play Window**  continues playing.

Unlock: led display continues playing synchronously with **Play Window**

3. 2. 4. 6 Turn on/off LED Screen power

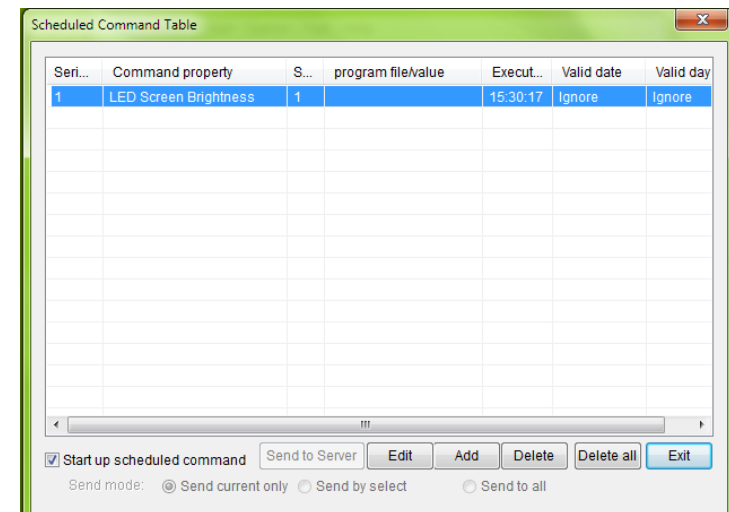
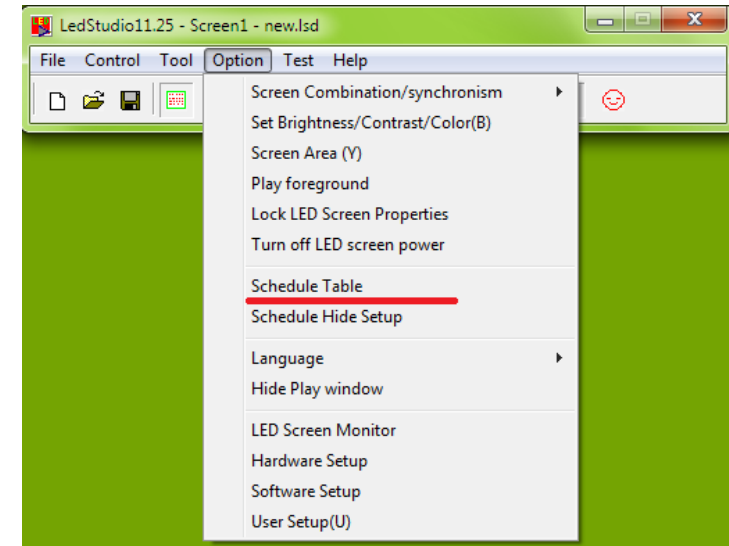


Turn on/off LED screen power: with **Function Board** remote power control applied, remote turn on/off LED screen power from LedStudio

Without **Function Board** remote power control applied, turn on/off the sending card signals.

3. 2. 4. 7 Schedule Table

To schedule commands to be carried out. For example, set the led display brightness to a lower value at night time. Or play curtain programs at preset time.



Start up scheduled command: select to enable Scheduled Command

Send to Server: applied in **Remote LED Screen Manager Online** mode

Note: Send to Server details, please refer to **Page49**

Send current only: send the **Scheduled Command Table** to the current selected led display

Send by select: select the led display(s) to send the **Scheduled Command Table** to

Send to all: send to all led displays listed in **Remote LED Screen Manager**

Online

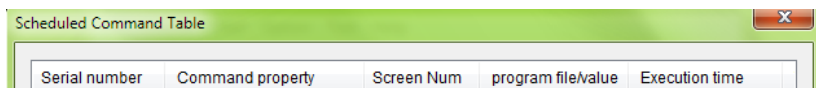
Edit: modify the selected Scheduled Command

Add: add a Scheduled Command

Delete: delete a selected Scheduled Command

Delete all: delete all listed Scheduled Command

Exit: Exit Scheduled Command Table Window



Serial number	Command property	Screen Num	program file/value	Execution time
---------------	------------------	------------	--------------------	----------------

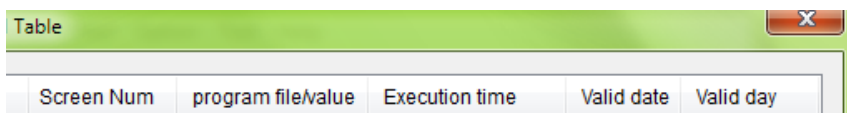
Serial number: the Scheduled Command list number

Command property: the Scheduled Command Name

Screen Number: the led display that the Scheduled Command will take effect on

Program file/value: contents of the Scheduled Command

Execution time: time for the Scheduled Command to take effect



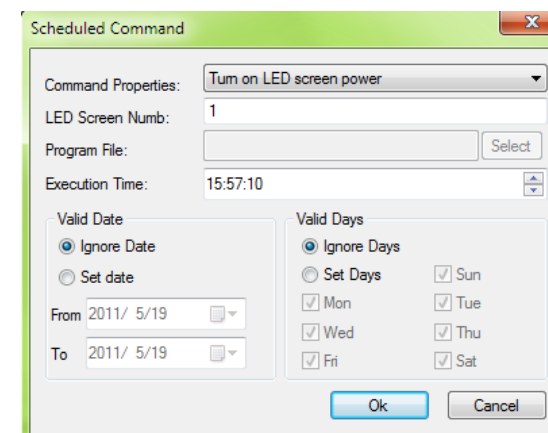
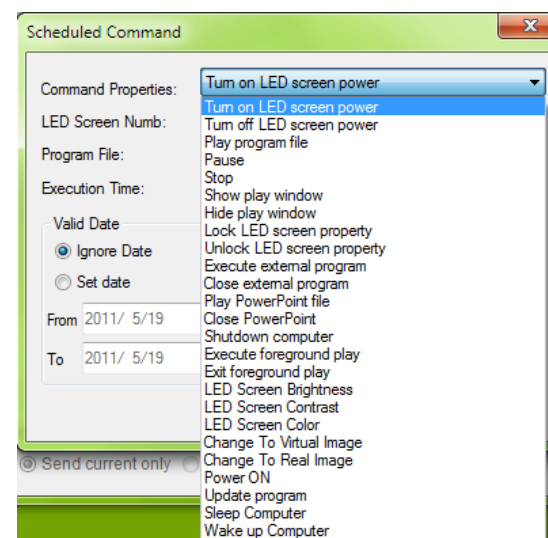
Screen Num	program file/value	Execution time	Valid date	Valid day
------------	--------------------	----------------	------------	-----------

Valid date: time period that the Scheduled Command will take effect

Valid day: day (Monday to Sunday) the Scheduled Command will take effect

To create a Scheduled Command:

1. Choose a command
2. Choose a LED Screen(led display) that the Scheduled Command will take effect on
3. Set Time, Date and Days. Click OK.

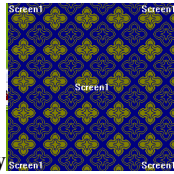



Turn on/off LED screen power: with **Function Board** remote power control applied, remote turn on/off LED screen power from LedStudio

Without **Function Board** remote power control applied, turn on/off the sending card signals.

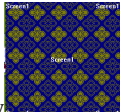
Play program file: .lsd file

Pause, stop: pause or stop at the execution time



Show/Hide play window: show or hide the **Play Window**

Lock LED screen property: freeze-frame on led display, and **Play**



Window continues playing.

Unlock LED screen property: led display continues playing synchronously with **Play Window**

Execute/close external program: run or quite external .exe program in LedStudio **Play Window** (the .exe program should be tested and it works in LedStudio)

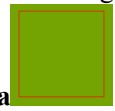
Play/close PowerPoint file: start or close powerpoint file

Shutdown computer: turn off the computer

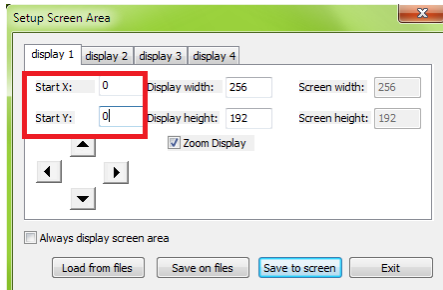
Execute/Exit foreground play: Play background/foreground. Take a 1280*768 computer monitor for example:

Set the Graphic card in extended mode;

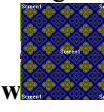
execute foreground play/play foreground is to set the (X,Y) of **Screen**



Area to the Start X and StartY of Screen Area preset setting.



Exit foreground play/Play background: set the (X,Y) of **Screen Area** to



(1281,0). The **Play Window** will not be seen in the computer monitor.

LED Screen Brightness: adjust the led display brightness.

0-100, total 101grades manual brightness adjustment

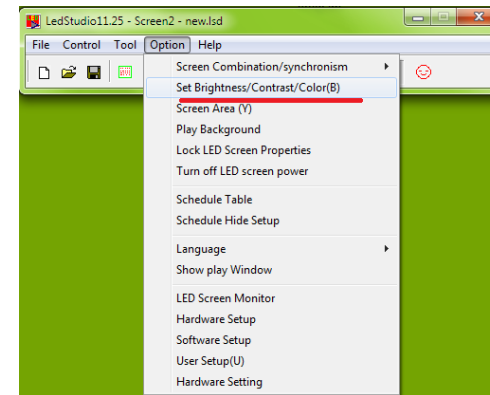
All LED Screen Brightness: adjust all the led display brightness

0-100, total 101grades manual brightness adjustment

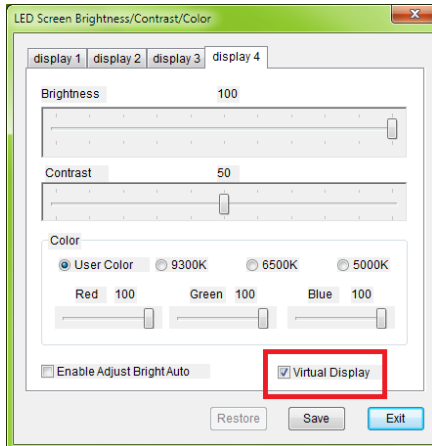
LED Screen Contrast: adjust the led display contrast.

0-100, total 101grades manual contrast adjustment

LED Screen Color: switch among the color temperature of **User Color** (0), **9300K** (1), **6500K** (2), **5000K** (3). Please refer to Set Brightness/Contrast/Color



Change to Virtual/Real Image: switch between virtual and none-virtual mode for virtual led display (when playing letters on virtual led display, better visual quality in real mode) refer to Virtual Display in Option, Set Brightness/Contrast/Color



Note: For virtual led display, if **Virtual Display** does not enable, the virtual led display will be considered as real pixel led display, and only has 1/4 of visual size working. For example, a 384*256 virtual led display, will work as 192*128.

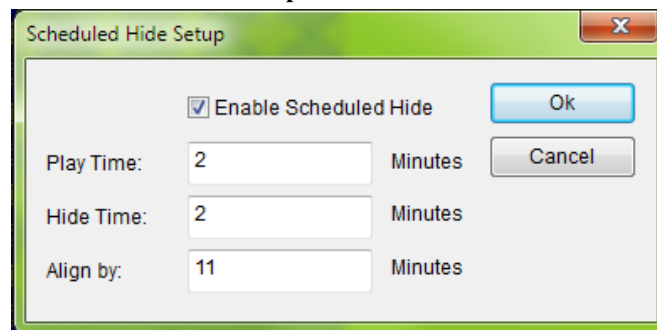
Power on: turn on computer

Update program: update program from server

Sleep computer: put the computer in sleep mode

Wake up computer: wake up the computer from sleep mode

3. 2. 4. 8 Schedule Hide Setup



Enable Scheduled Hide: enable/disable Scheduled Hide

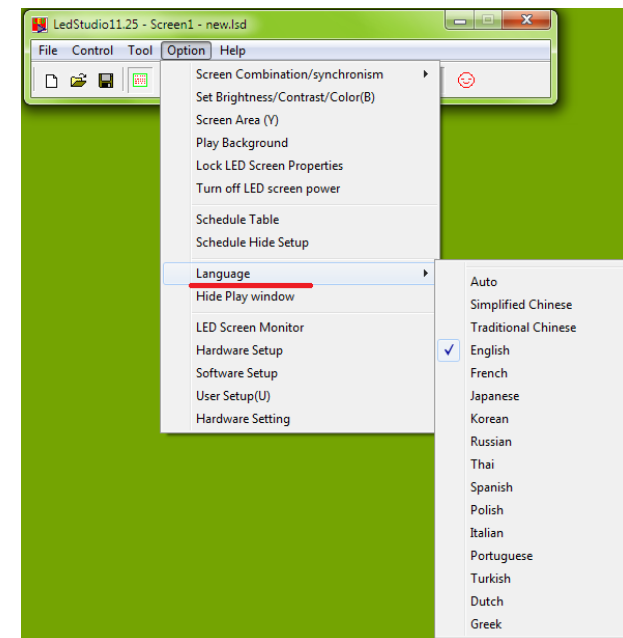
Play Time: show-up time duration for **Play Window**

Hide Time: hidden time duration for **Play Window**

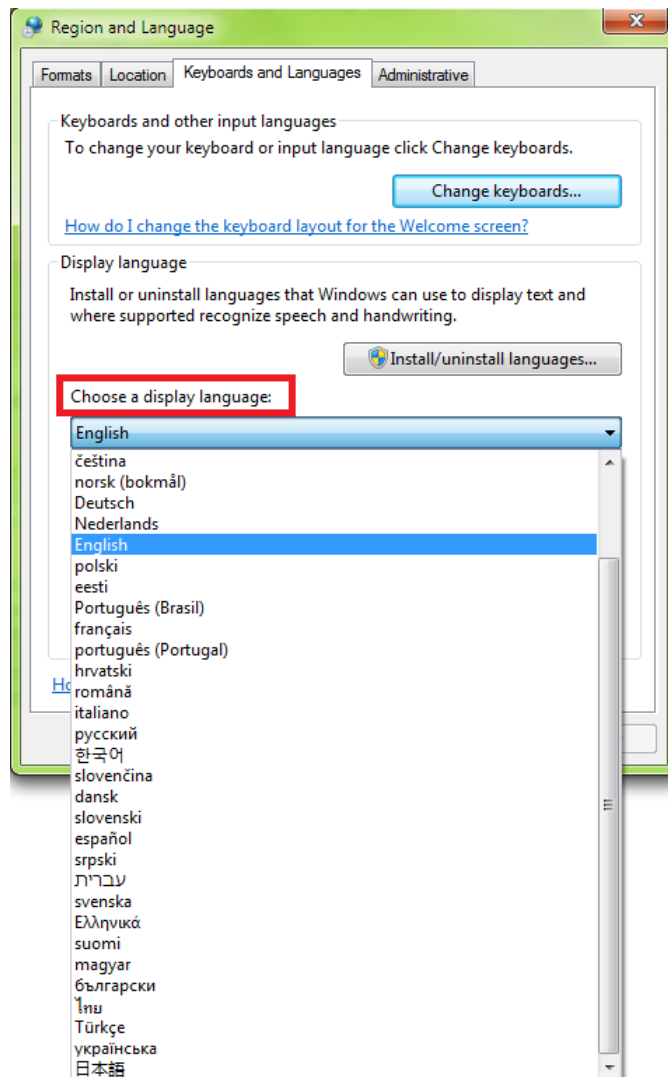
Align by: time moment to trigger Hide Time. For example, Align by 11 Minutes means 0, 11, 22, 33, 44, 55minute within an hour will activate the Hide Time. After Hide Time, it is Play Time.

3. 2. 4. 9 Language

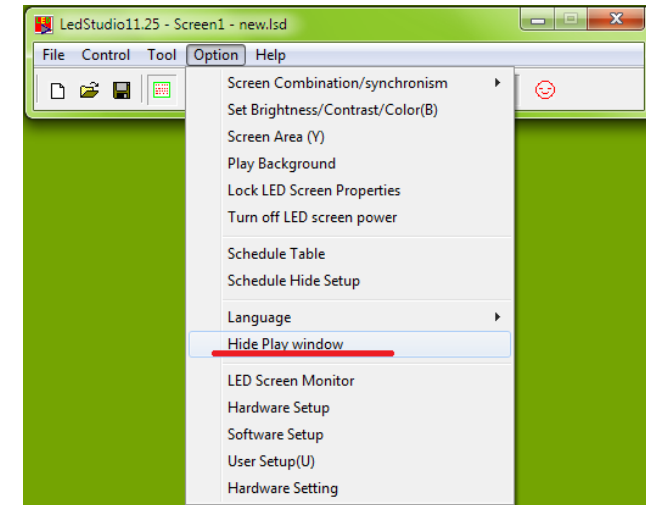
Change the LedStudio interface language. Ledstudio supports 15 interface languages, including: Simplified Chinese, Traditional Chinese, English, French, Japanese, Korean, Russian, Thai, Spanish, Polish, Italian, Portuguese, Turkish, Dutch, and Greek.



Note: For Windows 7, to change the interface language of LedStudio, First, change the **system display language** to the target language, for example, **English**; Sceond, choose English in **Language** of LedStudio.



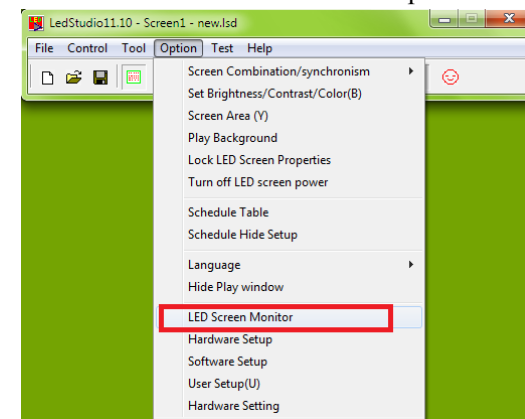
3. 2. 4. 10 Hide/Show Play Window

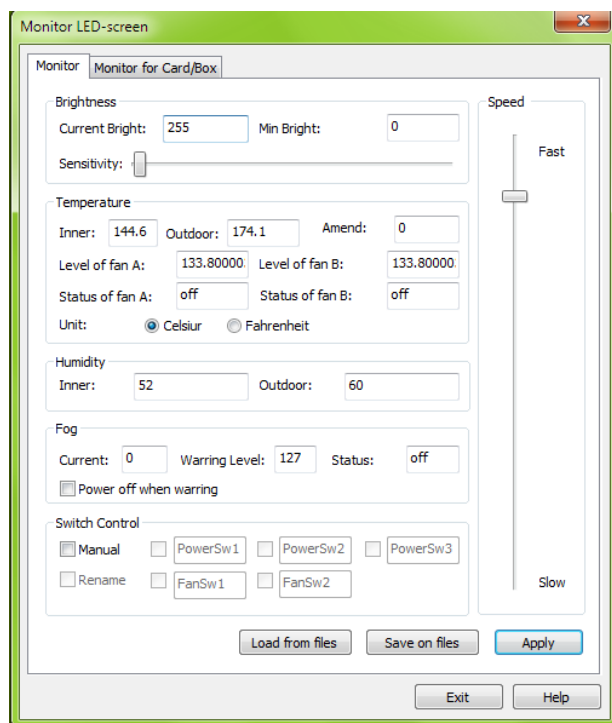


Hide Play Window: Hide the **Play Window**, **led display** will show the according computer desktop (desktop within the Screen Area)

3. 2. 4. 11 LED Screen Monitor

LED Screen Monitor is Function Board/Card control panel.



Monitor: Settings

Save on files: save settings as a .dat file

Load from files: load the settings from saved .dat file

Brightness:

Current Bright: the brightness read by external light sensor in **Function Board**

Min Bright: set the minimum brightness for auto brightness adjust.

Sensitivity: set the sensitivity for light sensor

Temperature:

Inner: the temperature detected by internal temperature sensor

Outdoor: the temperature detected by External temperature sensor

Amend: if detected temperature differs to the environment temperature, amend the

value.

Level of fan: Set the temperature value to activate the fan relays of **Function Board**.

Temperature is detected by internal temperature sensor

Status of fan: on/off

Humidity:

Inner: Internal Humidity Value

Outdoor: External Humidity Value

Fog (Function not ready)

Current: Current value

Warning Level: warning value

Statuses: on/off

Power off when warning: if enable, power relays on **Function Board** will be disconnected when warning level reaches warning value.

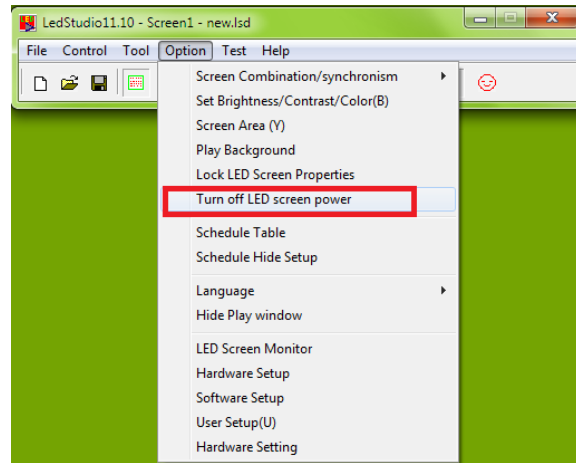
Switch Control

Manual: Manually switch on/off the power relays

Rename: rename the power relays names

Delay: when switch on/off the power relays, it delays 1 to 4 seconds.

Turn off LED screen power: Turn on/off relays (Power1, Power2, Power3) together



Note: when **Manual Switch Control** enabled, the **Turn off LED screen power** will automatically disable.

Monitor card/box (function not ready): read and show feedback data from every receiving card

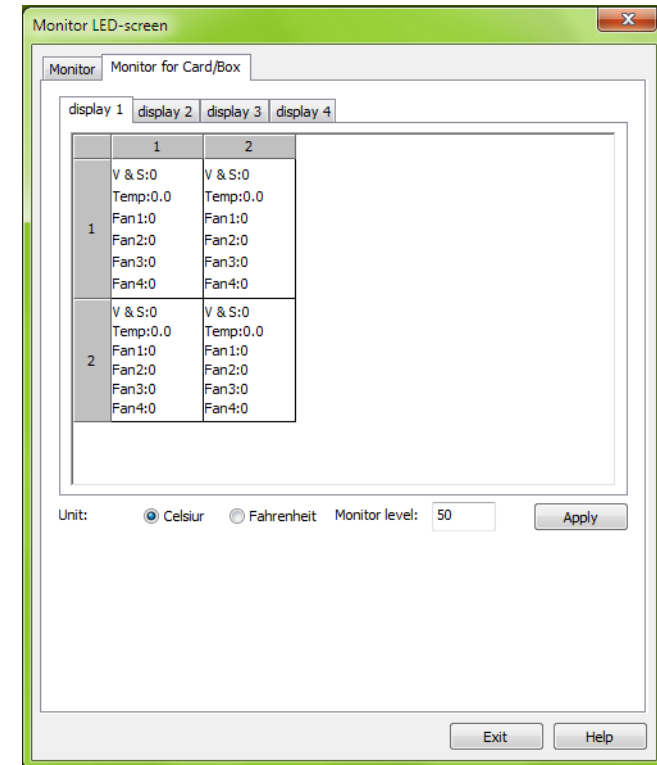
V&S: version number

Temp: Temperature value

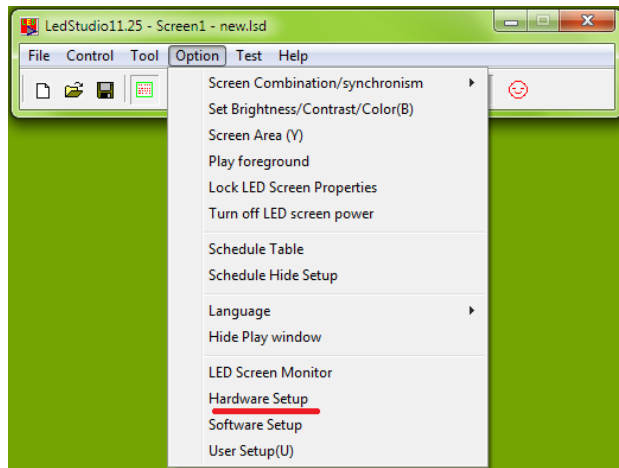
Fan1/Fan2/Fan3/Fan4: status of fan. 0 for off, 1 for on

Unit: show value of temperature in Celsius or Fahrenheit

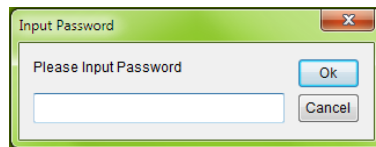
Monitor Level: set temperature value for monitoring



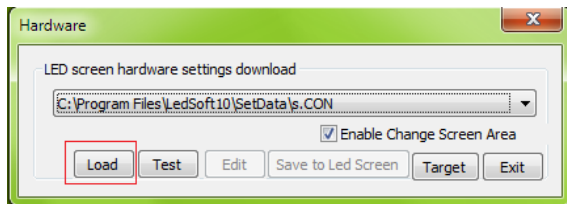
3. 2. 4. 12 Hardware Setup



Hardware Setup: to send .CON file (Display Connection setting file) and .RCG file (led display Driver for receiving card) to receiving cards



Password:

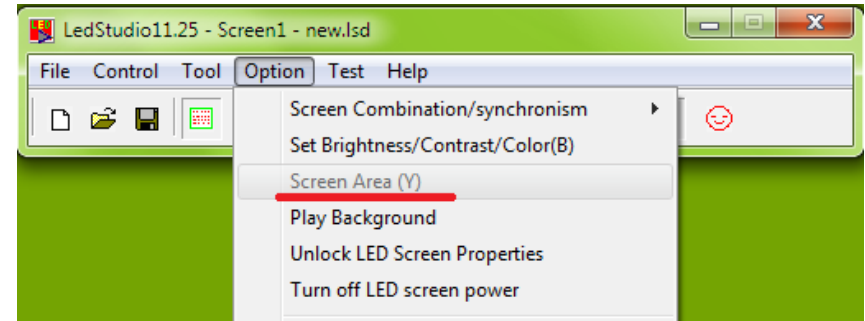


Load: to select the correct .CON file

Test: test the selected .CON file on receiving cards

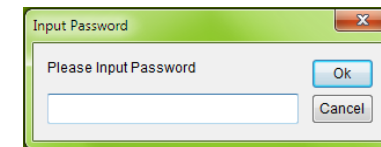
Enable Change Screen Area: allow the .CON file to change the size of Screen Area

Note: if Enable Change Screen Area is not ticked. The **Screen Area** will be Gray color as following screen shot.

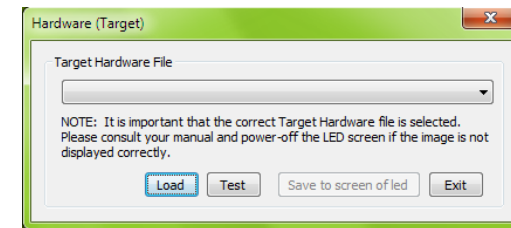


Save to Led Screen/led display: test before saving the .CON is required. If test result is correct, save to flash memory of receiving cards

Target: activate the window for uploading .RCG file



Password:

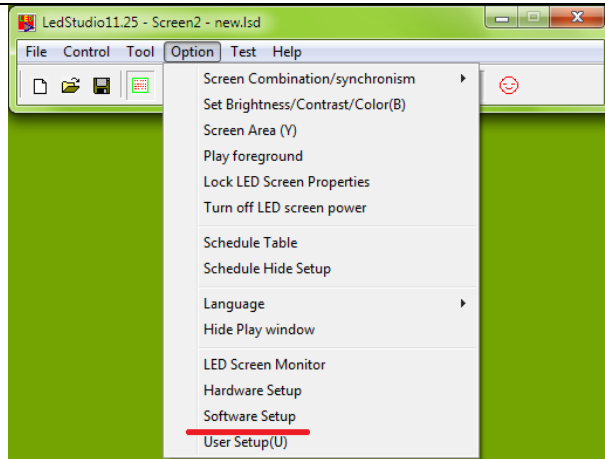


Load: to select the correct .RCG file

Test: test the selected .RCG file on receiving cards

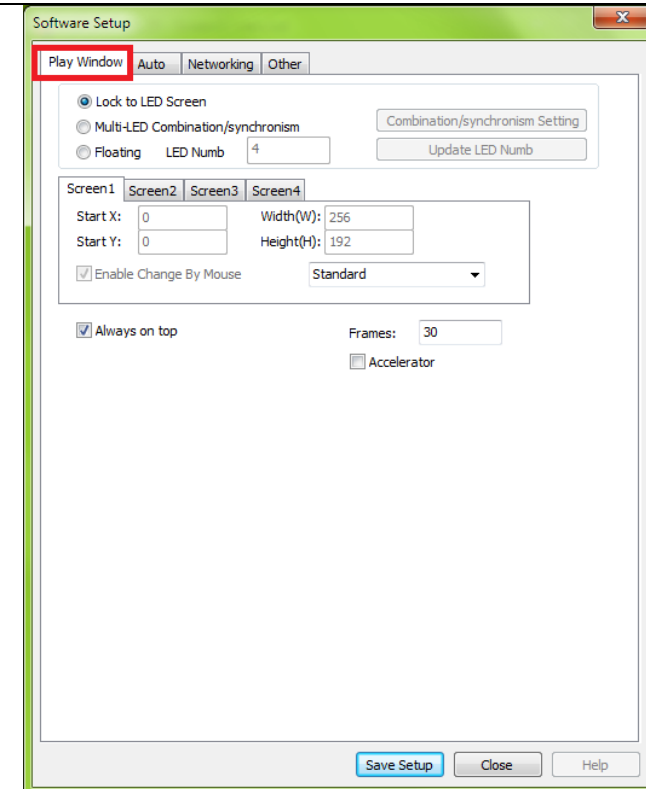
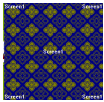
Save to Led Screen/led display: test before saving the .RCG is required. If test result is correct, save to flash memory of receiving cards

3. 2. 4. 13 Software Setup



3.2.4.13.1 Play Window

Play Window Setting:

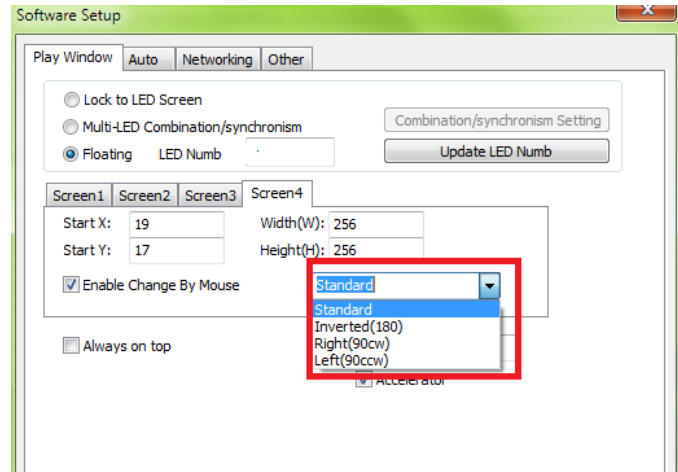


Always on top: enable and **Play Window** will always on top

Frames: Set frames per second

Accelerator: enable accelerator

Save Setup: save settings of **Play Window**



Standard:



Inverted (180):



Right (90cw):



Left (90ccw):



3.2.4.13.1.1 Lock to LED Screen

Lock to LED Screen: different from **Lock LED Screen Properties**.

It sets:

1. all Play Windows at (0, 0) position, cannot be edited
2. Size same as **Display Connection setting**. All **Play Windows** are locked so

cannot be dragged by mouse.

3.2.4.13.1.2 Floating

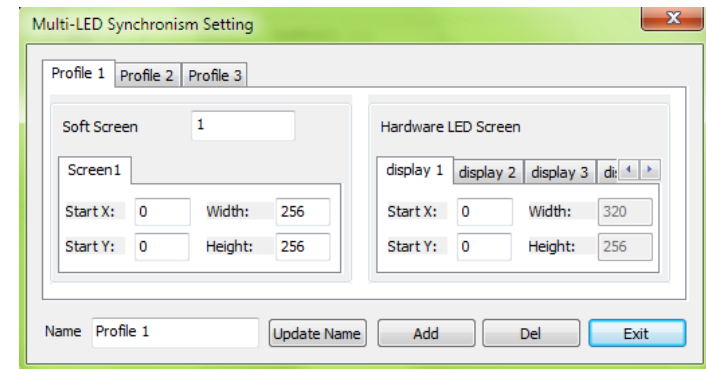
Floating: Play Window can be adjusted at

1. The quantity of Play Windows, in **LED Numb**, set **Play Window** quantity, click **Update LED Numb**
2. Start X, Start Y, of each **Play Window** (Screen1/Screen2...)
3. Size of each **Play Window**
4. **Enable Change by Mouse:** the Size, Position of each **Play Window** can be adjusted by mouse

3.2.4.13.1.3 Multi-LED Combination/synchronism

Multi-LED Combination/synchronism: set Profiles for Screen Combination/synchronism. Please refer to **Screen Combination/synchronism** (3.2.4.1 page15). **Note: Display QDY in Display Connection should be 2 or more.**

Select Multi-LED Combination/synchronism. Click **Combination/synchronism Setting**



Name: Profile name

Update Name: change the Profile name and click update name to refresh

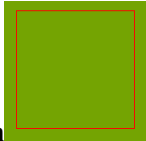
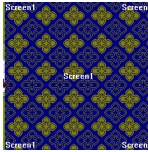
Add: add one Profile

Del: delete the selected Profile

Exit: Exit **Combination/synchronism Setting**

Soft Screen: set numbers of **Play Window/Simulated Screen**

Hardware LED Screen: read the numbers of Led display from **Display**

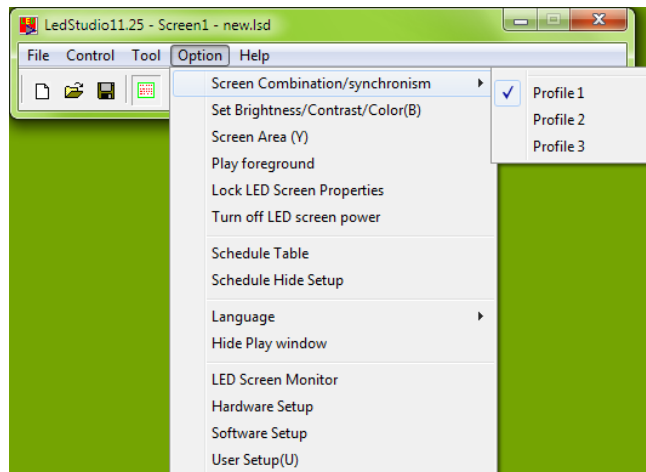


Connection (one **Red** rectangle means one **Hardware LED Screen**)

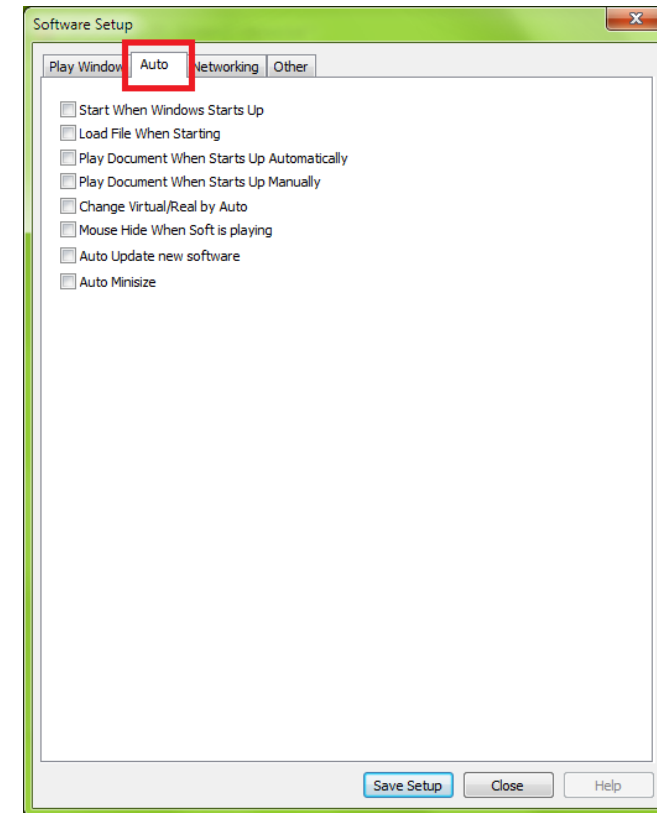
Start X: set the X position of (X, Y) coordination for the selected Soft Screen of Display

Start Y: set the Y position of (X, Y) coordination for the selected Soft Screen of Display

Now, the preset **Profiles** can be quickly switched.



3.2.4.13.2 Auto



Software Setup Auto settings:

Start when Windows Starts up: open LedStudio when Windows starts up


Load File when Starting: Load .lsd file automatically when open LedStudio

Play Document when starts up automatically: start playing files of .lsd file automatically

Play Document when starts up manually: start playing files of .lsd file when

click play 

Change virtual/real by auto: for virtual **led display**, playing letters in real-pixel mode for better visual effect, and playing image/video in virtual pixel mode; automatically switch.

Mouse hide when soft is playing: hide the mouse pointer  in **Play Window** when **Play Window** is playing.

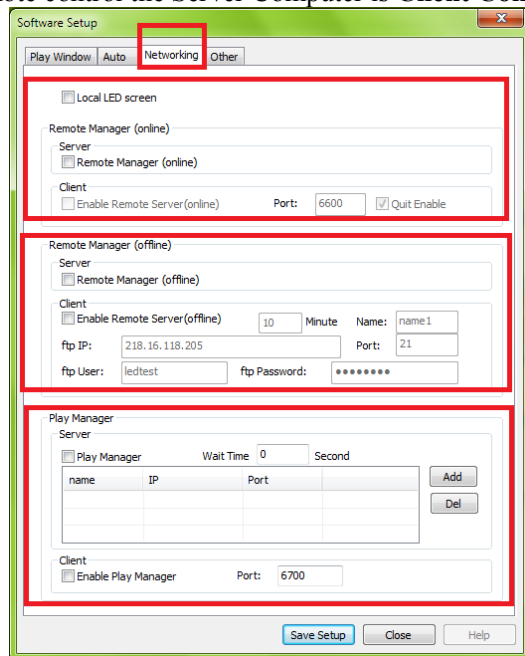
Auto update new software: automatically update LedStudio software

Auto minimize: Minimize LedStudio automatically

Save Setup: save settings

3.2.4.13.3 Networking

Networking setting is to remote control the led display (computer).
Computer directly connects the **led display** is **Server Computer**
Computer to remote control the Server Computer is **Client Computer**



Receive Net Order (add in version 11.72): not put into common usage

3.2.4.13.3.1 Online/real time remote control

1. Define

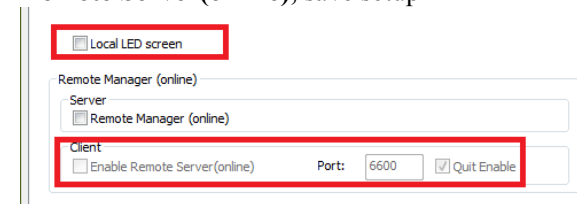
Online remote control/real time remote control: allow **Client Computer**
LedStudio to fully control **Server Computer LedStudio**.

Computer directly connects the **led display** is **Server Computer**

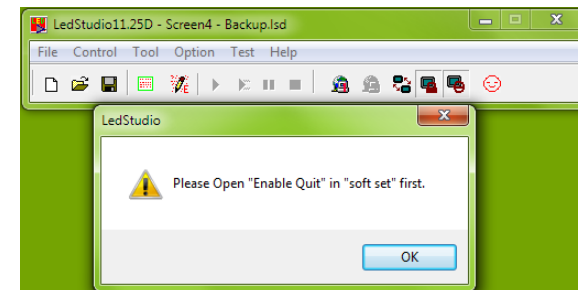
Computer to remote control the Server Computer is **Client Computer**

2. Settings

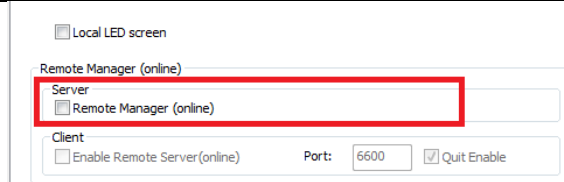
1. **Server computer LedStudio**, enables **Local LED screen** and **Client Enable Remote Server(online)**, save setup



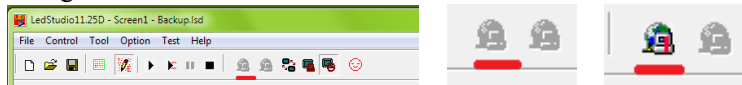
Note: **Quite Enable**, if untenable it, Server Computer LedStudio does not close.



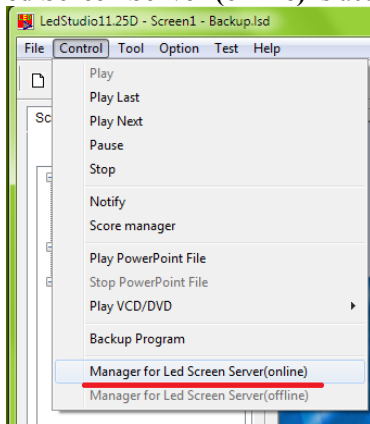
2. **Client computer LedStudio**, enables **Server Remote Manager (online)**, save setup



3. **Client compute LedStudio, Remote LED Screen Manager(Online) Icon changes from inactive to activate**



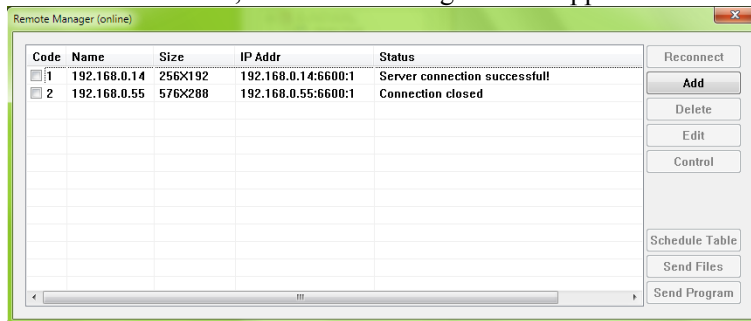
And **Manager for Led Screen Server (online)** is activated.



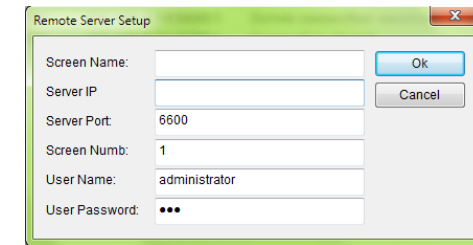
4. **Client Computer LedStudio, Click Remote LED Screen Manager**



(Online) Icon, or **Manager for Led Screen Server (online)** under **Ctrl Menu**, then the following window appears



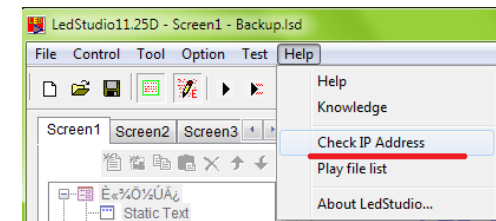
Click **Add**



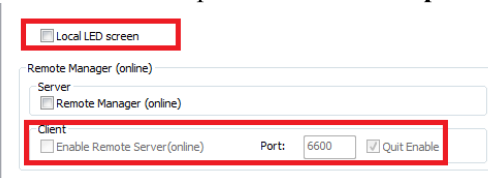
Screen Name: Type in the led display name (or leave it empty)

Server IP: Type in **Server Computer IP**.

Tip: use the Check IP Address in Help Menu, to check the Server Computer IP



Server Port: same port as **Server Computer** preset port



Screen Numb: type in a number

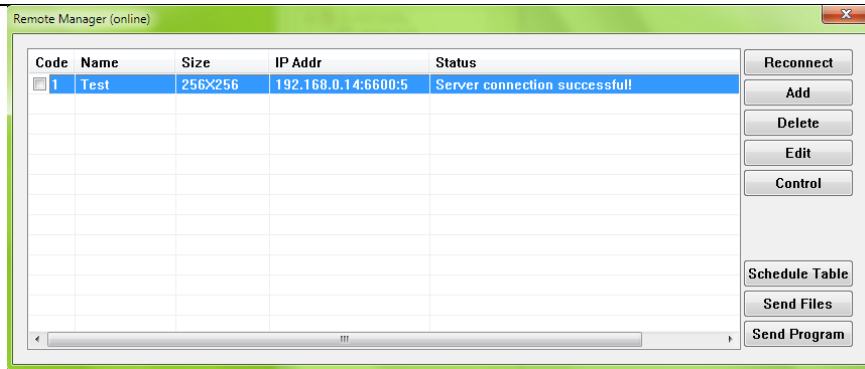
User Name: the LedStudio **User** name of **Server Computer**

User Password: the LedStudio **User password** of **Server Computer**

Click **Ok**

3. Available Operations after Setting Up

When **Client Computer** and **Server Computer** is setup and connected, in **Client Computer LedStudio** will have the following window.



1. Reconnect/Add/Delete/Edit/Control

Reconnect: try reconnecting to the added **Server Computer**

Add: add another **Server Computer**

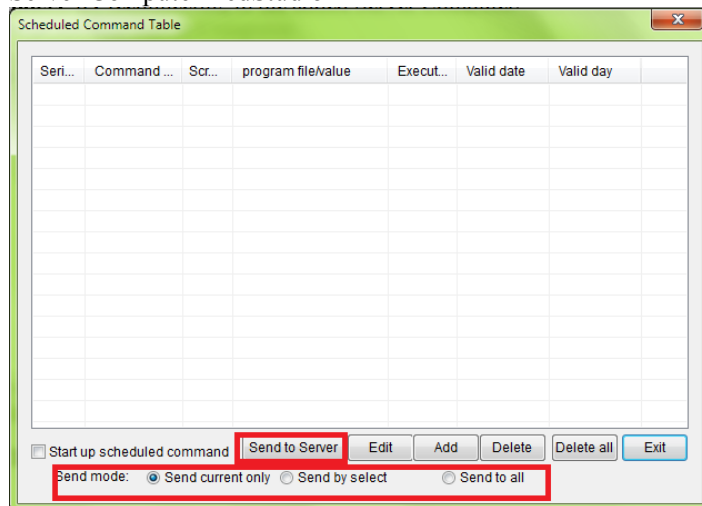
Delete: delete a selected **Server Computer**

Edit: change info of selected **Server Computer**

Control: access to the **Server Computer Desktop**, realize Remote Desktop Control.

2. Schedule Table

Schedule Table: set **Schedule Command Table** (refer to [3. 2. 4. 7 Schedule Table](#)) and send to Server Computer LedStudio



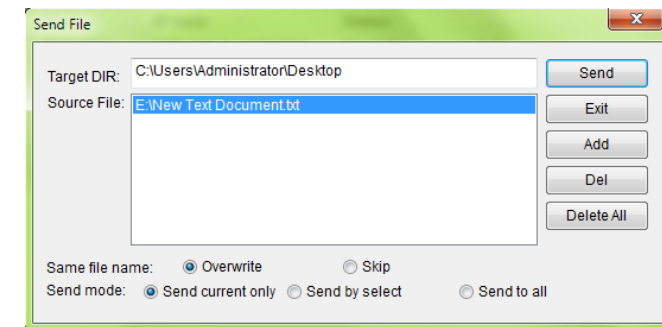
Send current only: send the Scheduled Command Table to the current selected **Server Computer**

Send by select: select the **Server Computer(s)** to send the Scheduled Command Table to

Send to all: send to all **Server Computers** listed in **Remote LED Screen Manager Online**

3. Send Files

Send Files: send files from Client Computer to Server Computer



Target DIR: Server Computer Path to store incoming files from Client Computer

Source File: the outgoing files list

Send: send listed **Source File** to **Target DIR**

Exit: quite **Send File** window

Add: add a file to Source File

Del: delete a selected Source File

Delete All: delete all Source File

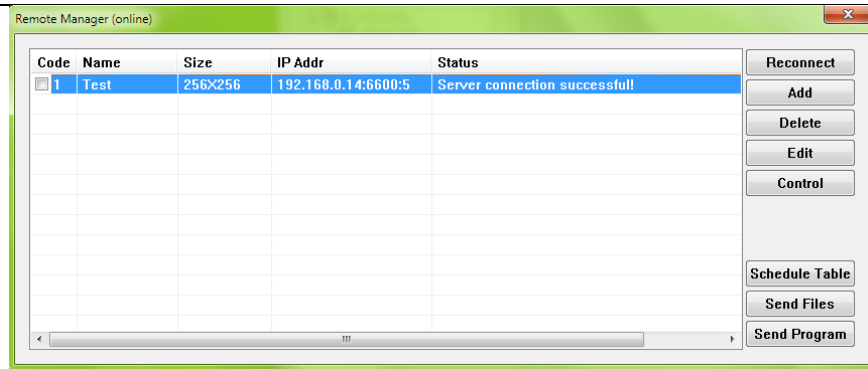
Same file name **Overwrite:** if **Target DIR** has a file with the same name of **Source File**, **Source File** replaces the **Target DIR** file

Same file name **Skip:** if **Target DIR** has a file with the same name of **Source File**, **Source File** skips transmitting to **Target DIR**.

Send current only: send the **Source File** to the current selected Server Computer

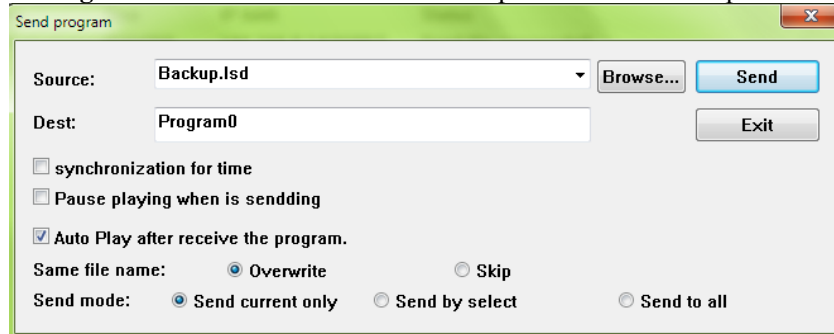
Send by select: select the Server Computer(s) to send the **Source File** to

Send to all: send **Source File** to all Server Computers listed in Remote LED Screen Manager Online



4. Send Program

Send Program: send .lsd file from Client Computer to Server Computer



Source: the outgoing .lsd file

Dest: Destination. **Server Computer** Path to store incoming .lsd file from **Client Computer**

Browse...: browse the Client Computer to select the .lsd file

Send: send Source to Dest

Exit: quite **Send Program** window

Synchronization for time: set **Server Computer** time synchronous with **Client Computer**

Pause playing when is sending: Pause **Server Computer LedStudio** playing when **Server Computer** is receiving .lsd file from **Client Computer**

Auto Play after receive the program: **Server Computer LedStudio** load and play the incoming .lsd file immediately when finishing receiving.

Same file name **Overwrite:** if **Dest** has an .lsd file with the same name of **Source**, **Source** .lsd File replaces the **Dest** .lsd file

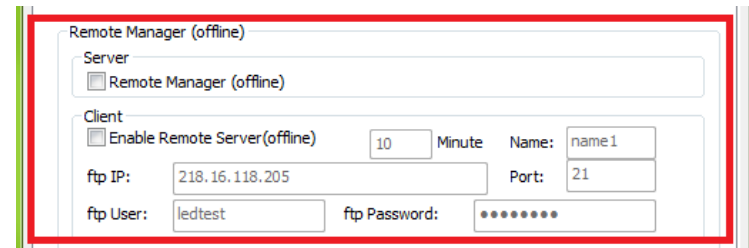
Same file name **Skip:** if **Dest** has an .lsd file with the same name of **Source**, **Source** .lsd File skips transmitting the .lsd file

Send current only: send the **Source** .lsd file to the current selected Server Computer

Send by select: select the Server Computer(s) to send the **Source** .lsd file to

Send to all: send **Source** .lsd file to all Server Computers listed in Remote LED Screen Manager Online

3.2.4.13.3.2 FTP Server



1. Define:

Client Computer LedStudio uploads settings and files to FTP Server, then **Server Computer LedStudio** downloads and carries out.

Computer directly connects the **led display** is **Server Computer**
Computer edits settings and files for Server Computer is **Client Computer**
Before **Settings**, the **FTP Server** should be setup and ready.

2. Settings:

1. In LedStudio of **Server Computer Enable Remote Server** (offline)
Type in the FTP info: FTP IP, Port, FTP User (name), FTP Password
10 **Minute:** means every 10 minutes **Server Computer LedStudio** will fetch updates from **FTP server**

- Remote Manager (offline)

Server

☒ Remote Manager (offline)

Client

☐ Enable Remote Server (offline) Minute Name:

ftp IP: Port:

ftp User: ftp Password:

-

LedStudio11.25 - Screen1 - new.lsd

File Control Tool Option Test Help

Play
Play Last
Play Next
Pause
Stop
Notify
Score manager
Play PowerPoint File
Stop PowerPoint File
Play VCD/DVD
Backup Program
Manager for Led Screen Server(online)
Manager for Led Screen Server(offline)

- 

53

Remote Server Setup

Screen Name: FTP Server Test

Server IP: 218.16.118.205

Server Port: 21

Screen Numb: 1

User Name: ledtest

User Password:

Ok

Cancel

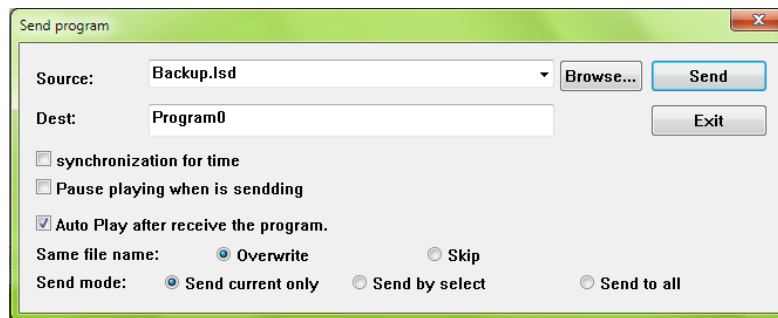
[illegible]

Add: add another FTP server
Delete: delete the selected FTP server
Edit: edit the selected FTP server

3. Available Operations

1. Send Program

Send Program: send .lsd program from **Client Computer** to **FTP Server Computer**



Source: the outgoing .lsd file

Dest: Destination. **FTP Server Computer** Path to store incoming .lsd file from

Client Computer

Browse...: browse the **Client Computer** to select the .lsd file

Send: send Source to Dest

Exit: quite **Send Program** window

Synchronization for time: set **Server Computer** time synchronous with **Client**

Computer

Pause playing when is sending: Pause **Server Computer LedStudio** playing when **Server Computer** is receiving .lsd file from **FTP Server Computer**

Auto Play after receive the program: **Server Computer LedStudio** load and play the incoming .lsd file immediately when finishing receiving.

Same file name **Overwrite:** if **Dest** has an .lsd file with the same name of **Source**,

Source .lsd File replaces the **Dest** .lsd file

Same file name **Skip:** if **Dest** has an .lsd file with the same name of **Source**,

Source .lsd File skips transmitting the .lsd file

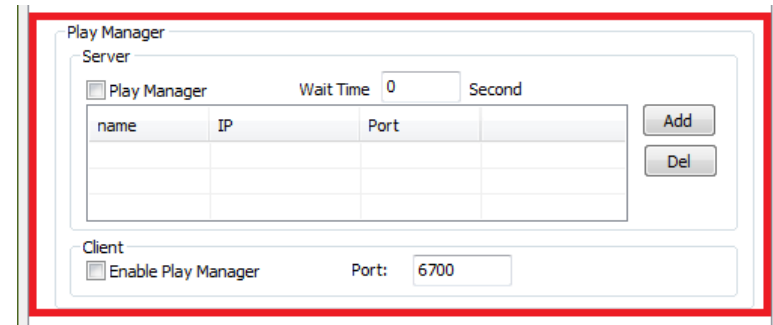
Send current only: send the **Source** .lsd file to the current selected **FTP Server**

Computer

Send by select: select the **FTP Server Computer(s)** to send the **Source** .lsd file to

Send to all: send **Source** .lsd file to all **FTP Server Computers** listed in **Remote LED Screen Manager (offline)**

3.2.4.13.3.3 Play Manager



Play Manager: works with [Online/real time remote control](#)

1. Define:

Computer directly connects the **led display** is **Server Computer**
 Computer to remote control the **Server Computer** is **Client Computer**

Purpose: Set all the listed **Server Computers Play/ Stop** synchronously



2. Settings:

Note: **Server Computers** are set **online remote control/real time remote control**

1. Server Computers Enable Play Manager

Client

☒ Enable Play Manager Port: 6700

2. Client Computer Enable Play Manager

Play Manager

Server

☒ Play Manager Wait Time 0 Second

name	IP	Port	

Add

Del

Add: add the Server Computes to the list

Del: Delete the selected Server Computer(s)

Server

☒ Play Manager Wait Time 0 Second

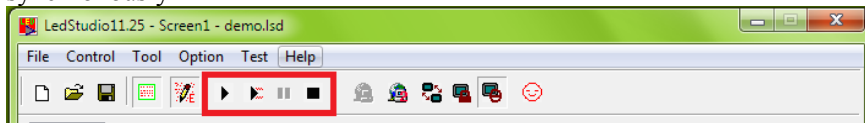
name	IP	Port	
road	192.168.0.55	6700	
dddd	192.168.0.14	6700	

Add

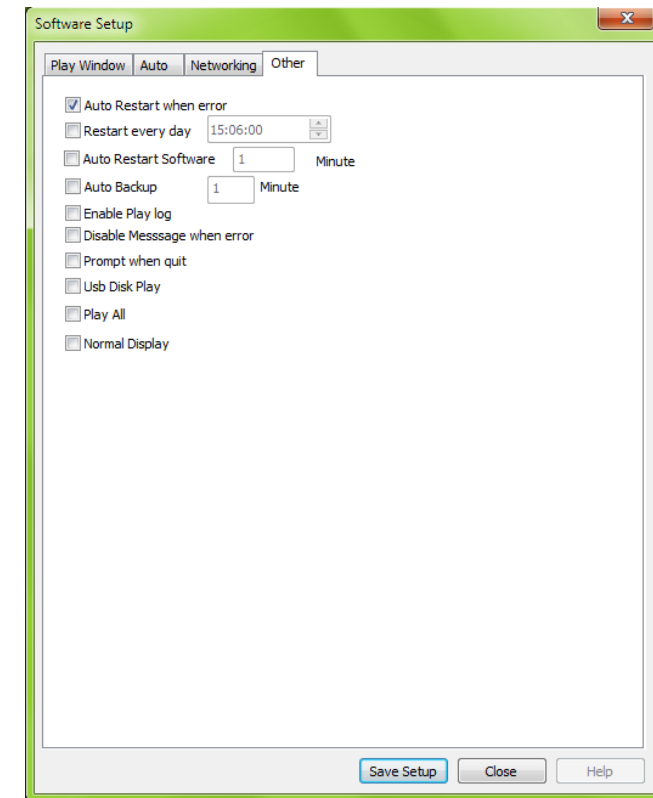
Del

3. Save Setup.

Click **Play/Stop**, all the listed **Server Computers** will Play/Stop synchronously



3.2.4.13.4 Other



Auto Restart when error: automatically restart LedStudio when encounter error

Restart every day: schedule restarting LedStudio everyday

Auto Restart Software: restart LedStudio every preset minute(s)

Auto Backup: automatically back up files of .lsd file

Enable Play log: enable Play log, in **LedStudio Installation Folder**,

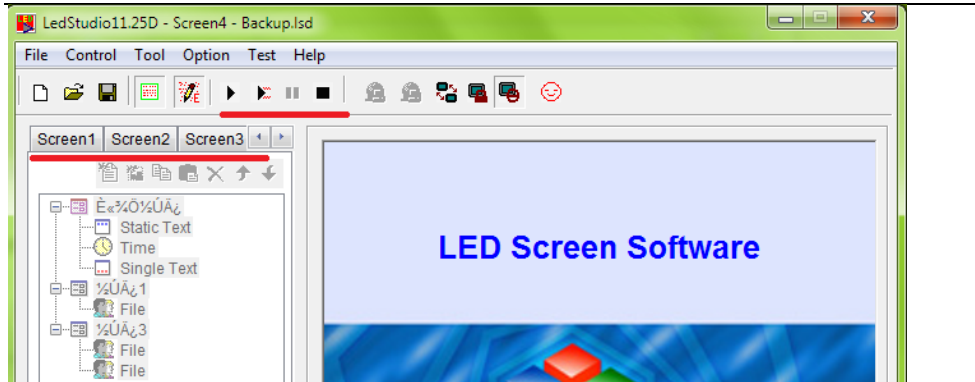
there is a playlog.txt listing play info of media files played by LedStudio

Disable Message when error: does not allow error message prompt

Prompt when quit: ask before quit

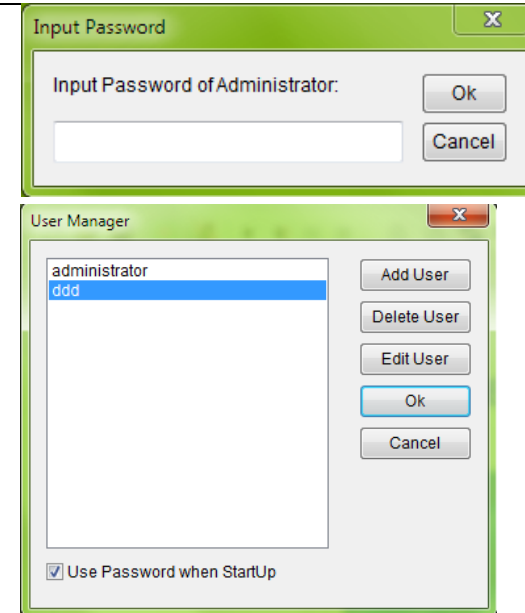
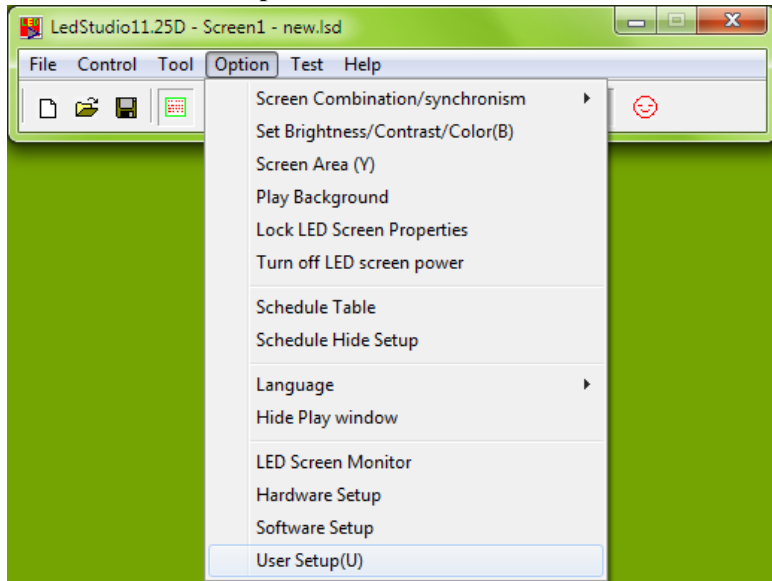
Usb Disk Play: LedStudio load and play .lsd program from USB disk as priority

Play all: all Screens Play/Pause/Stop together



Normal Display: For No-Sending Card Mode Only. LedStudio capture the contents of **Screen Area** and send directly to receiving cards.

3. 2. 4. 14 User Setup



Password: 888

Add: add a new user account for LedStudio

Delete User: delete a selected User account

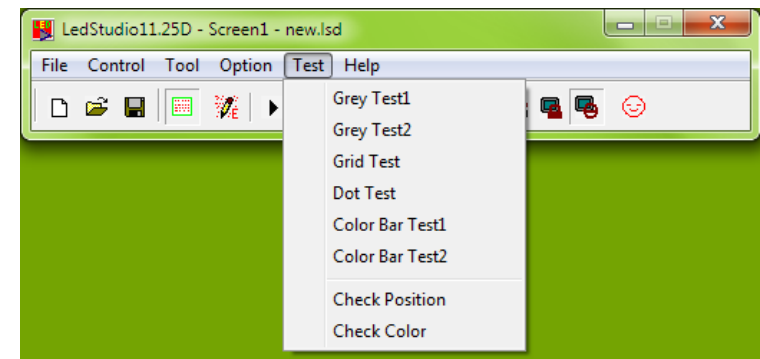
Edit User: Edit the selected User account info

Use Password when StartUp: when open LedStudio, it asks password to unlock.

3. 3 Features introduction

4.

3. 3. 5 Test Menu

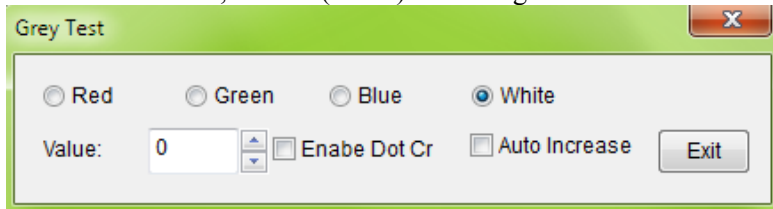


3.3.5.1 Grey Test1

Grey Test1: test Grey level from 0-255 in sequence of Red, Green, Blue, White

3.3.5.2 Grey Test1

Grey Test2: select a color, a value (0-255) for testing

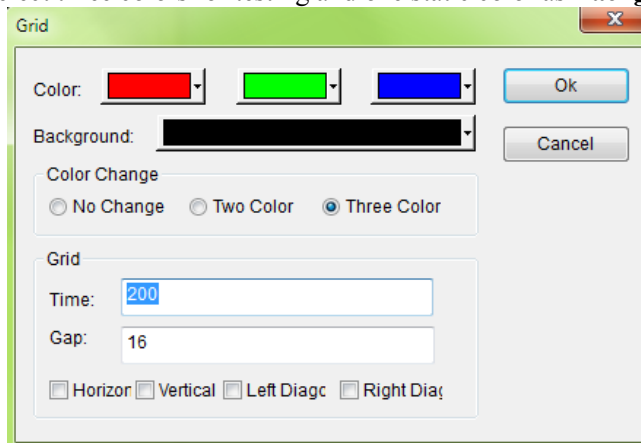


Auto Increase: continue testing next grey level up to 255. Then test again from 0 to 255.

Enable Dot Correction: Enable the effects of Screen Area Color Correction (refers to Screen Area Color Correction)

3.3.5.3 Grid Test

Grid Test: Select three colors for testing and one static color as **Background**



Color Change:

No Change: only the first color (Red color in the upper picture) runs in testing

Two Color: the first two colors run in testing (Red and Green)

Three Color: all three colors run in testing

Grid:

Time: in millisecond; the running speed of testing grid

Gap: the pixel numbers between two testing lines

Horizontal: testing line runs horizontally

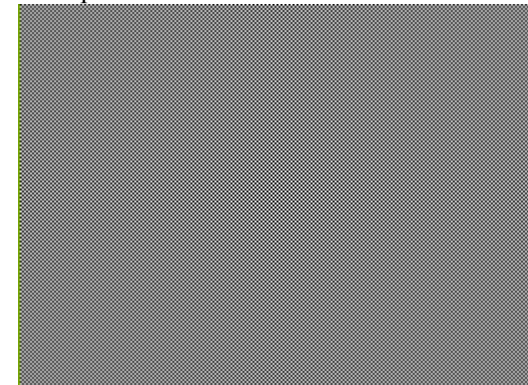
Vertical: testing line runs vertically

Left Diagonal: testing line runs in bias way

Right Diagonal: testing line runs in bias way

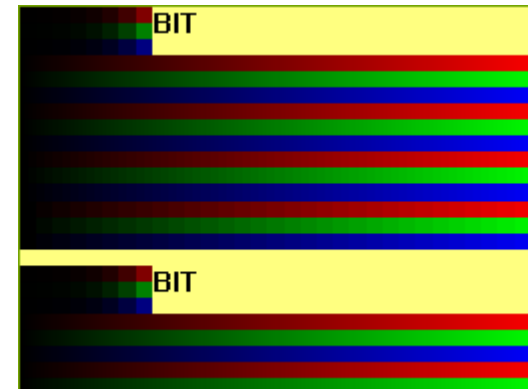
3.3.5.4 Dot Test

Dot Test: check for bad pixels



3.3.5.5 Color Bar Test

Color Bar Test1:



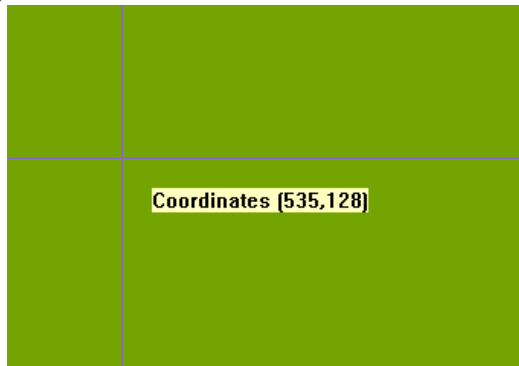
3.3.5.6 Color Bar Test2

Color Bar Test2: Choose color for color bar test



3.3.5.7 Check Position

Check Position: get coordination of Mouse Pointer

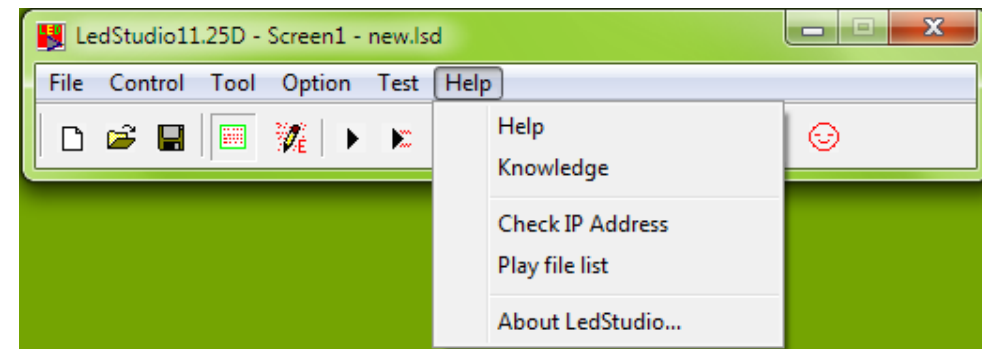


3.3.5.8 Check Color

Check Color: get RGB info



3.3.6 Help Menu



3.3.6.1 Help

Help: activate the LedStudio manual

3.3.6.2 Knowledge

Knowledge: some simple tips for LedStudio

3.3.6.3 Check IP Address

Check IP Address: get the IP Address of computer

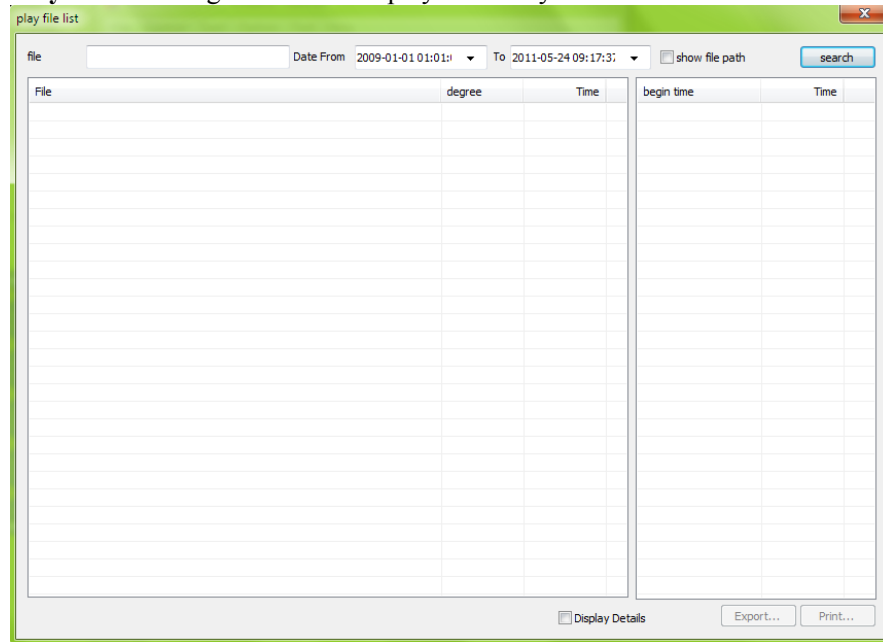
3.3.6.4 About LedStudio

About LedStudio: show LedStudio Version

License: manage license

3.3.6.5 Play File List

Play file list: a log file for all the played files by LedStudio



File: type in the File Name for search

Date From TO: select a time period for search

Show file path: show the played file path in the computer

Search: start searching and get result listed

File: file name

Degree: how many times the file has been played

Time: total time the file played

Begin time: the starting playing time

Time: time duration the file has been played for

Export: export the search result to Microsoft Excel file format

Print: print the search result

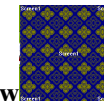
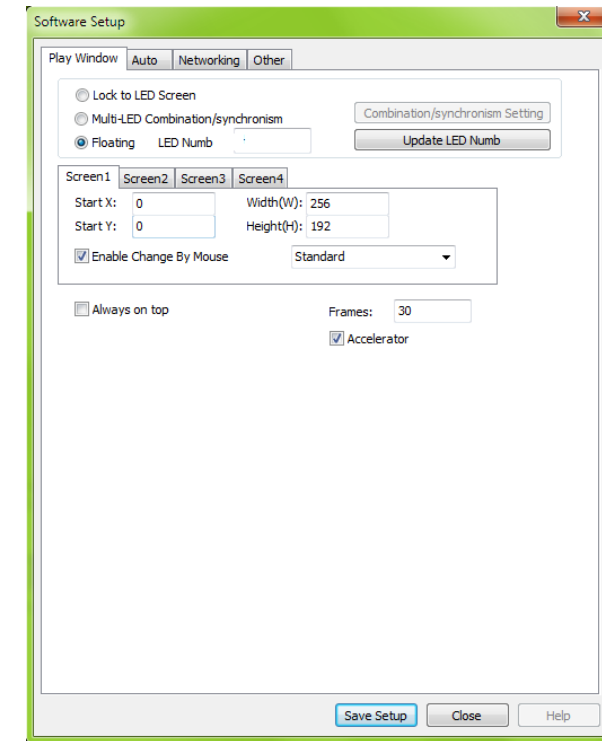
Display detail: when export or print the search result, including the info of **Begin time** and **Time**

Empty Log File: Delete log file

Log File save as: Save log file.

3.3 How to make a .lsd file

3.3.1 Setup Playing Window



Usually, set the **Play Window** the same size as that of **led display**.

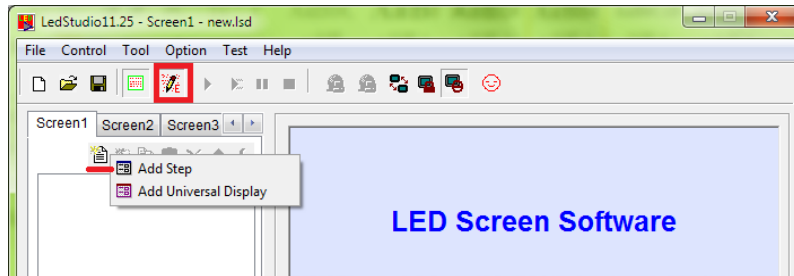
Select **Lock to LED Screen**. LedStudio will set the Play Window size according to .CON file and **Start X** and **Start Y** is (0, 0)

Or Select **Floating** to adjust Play Window manually. (Refer to [Software Setup Play Window](#)) page 39

3.3.2 Open a New Page of Program

3.3.2.1 Add Step, Add Universal Display

Click **Allow Edit** icon, then **New Page of Program** icon



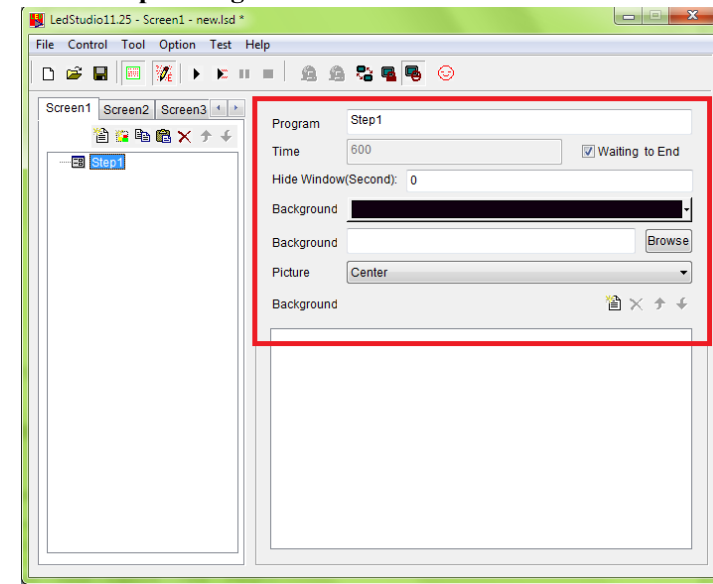
Add Step: Steps are played in order, from Step 1 to Step 2 to last Step then back to Step 1. It is Step1 to Step Last to Step1 circle loop play.

Add Universal Display: this kind of Step have loop play independently. **Universal Display** is always at an upper layer of **Add Step**. Usually for Company Logo, etc.

Note: only one Universal Display in an .lsd file

Time Window usually put in **Universal Display** page, if Time Window put under **Step2** for example, then **Step 3** and following Steps will not be played, because Time will never stop. Then Step2 will always be played.

3.3.2.2 Step Settings



Program: Change the Step name (Default from Step 1, Step 2, Step 3...)

Time (second): deselect **Waiting to End**, set time durations for the Step. For example, 60, means the **Step1** will be played in 60 seconds, then play **Step2**.

Hide Window (Second): Hide **Play Window** for preset seconds when **Step1** is finished. In the same time, **Step 2** is playing.

Background: Background color of **Play Window**

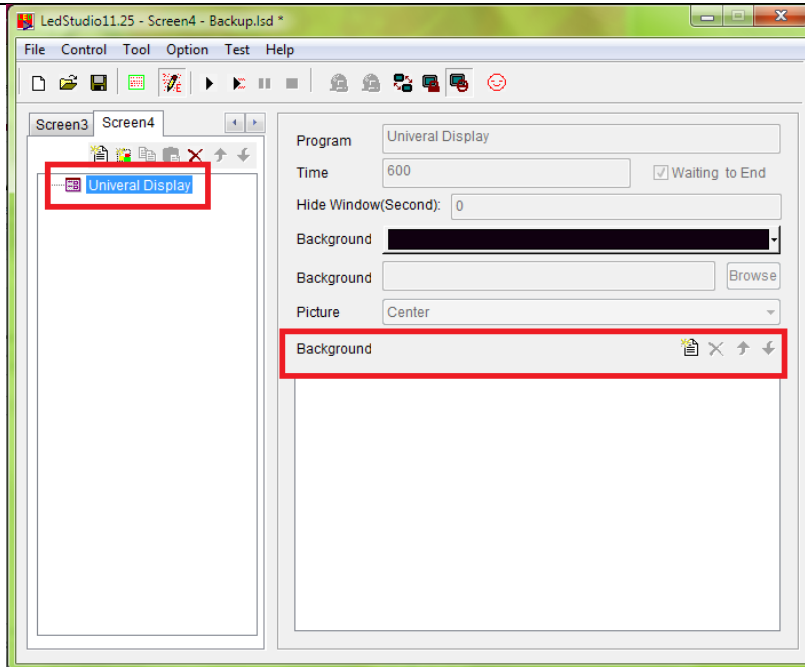
Background: Background picture of **Play Window**

Picture: Center/Zoom/Stretch/Tile the background picture

Background: background music, loop play.

3.3.2.3 Universal Display Settings

Universal Display Setting: only adding Background Music is available. Normal program page plays in order, while overall program page plays continuously, without any time limits. (Such as time display)



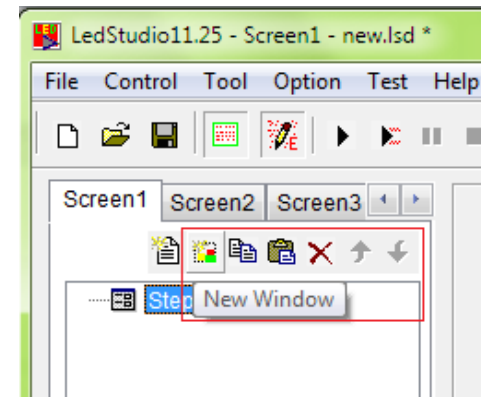
To delete a program page, use the delete button

To change the order of page, use the moving button , .

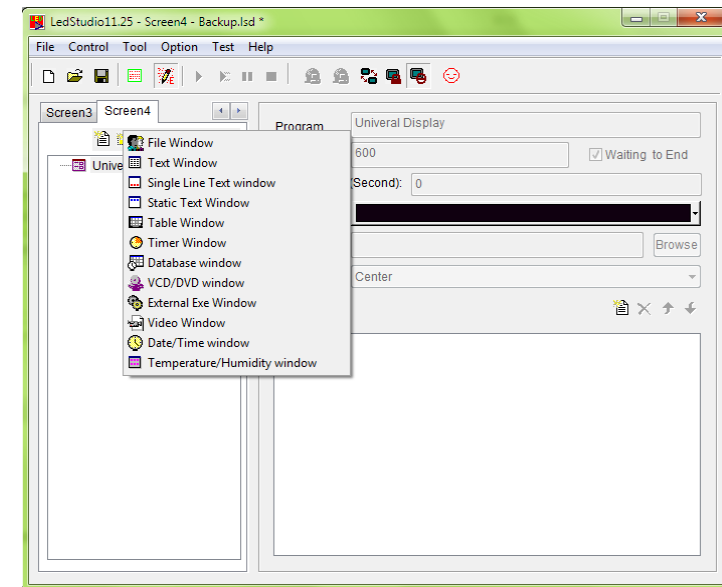
3. 3. 3 Add New Window

After a **Step** or **Universal Display** is added, the **New Window icon** , Copy


icon , Paste icon , Delete icon , are activated. , .



Click: **New Window icon**

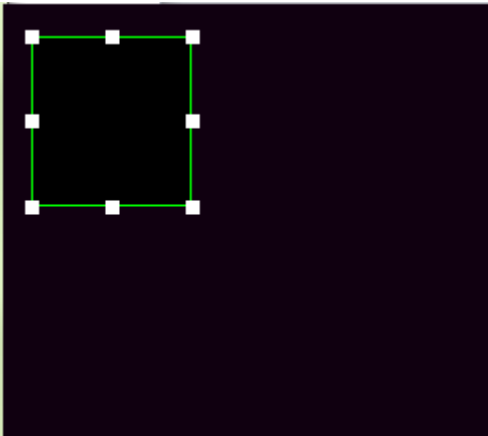


3.3.3.0 Important Notes:

Name:	Single Text	Frame:	Single li		Standard
StartX:	105	Width:	336	<input type="checkbox"/> Lock	
StartY:	99	Height:	316	<input type="button" value="Timer"/>	

The above window appear in every **New Window**, it is **File Showing Area Setting Widnow**

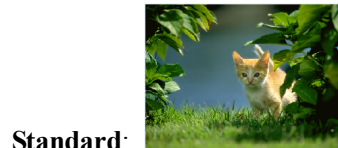
File(s) Showing Area Settings: the **Showing Area** (the green rectangle) is inside the **Playing Window**. All files of **File Window** will show inside the **Showing Area**.



Name: Change the default name File

Frame: Frame of Showing Area; **None**, no frame line; **Single line**, one frame line; **Double lines**, two frame lines; **Three lines**, three frame lines

Color: Frame line color



Right (90cw):



Left (90cw):



Start X: set the X position of (X, Y) coordination for **Showing Area** in **Play Window**

Start Y: set the Y position of (X, Y) coordination for **Showing Area** in **Play Window**

Width/Height: Set the size of Showing Area

Lock: when lock, mouse pointer cannot drag to move or drag to resize the **Showing Area** inside the **Play Window**

Timer: designed for **Time Window**.

From Computer Time: By 30 Minute 30 Sec means every 30 minutes of computer clock, **Time Window** appears for 30 seconds. **Time Window** is hidden besides that every 30 seconds.

Front half: start hiding **Time Window** earlier.

For example, From Computer Time By 1 Minute 10(X) Sec,

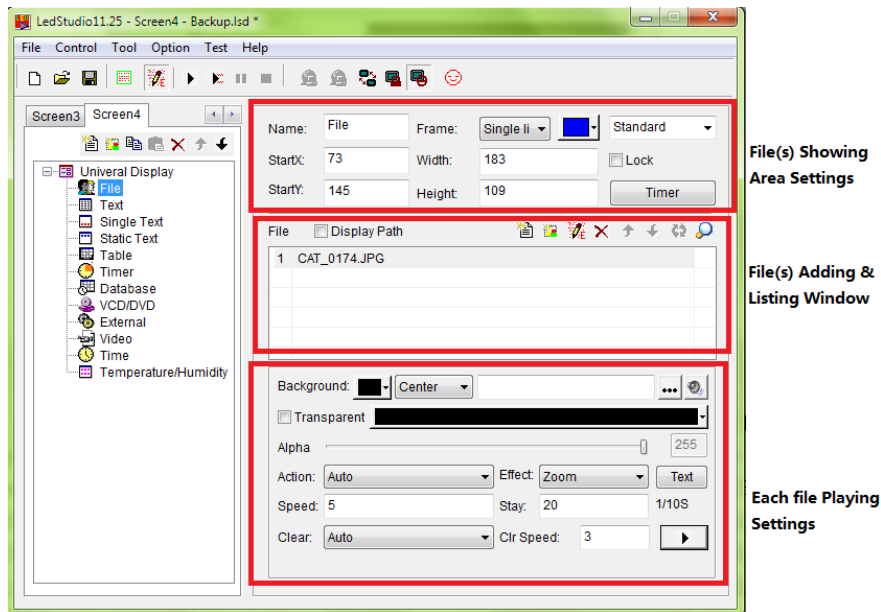
Without Front half enable, Time Window start hiding when second reaches 59 second

With Front half enable, Time Window start hiding when second reaches 54(59-X/2) second

From Play Time by 30 Second 5 seconds means every 30 seconds of playing time, show **Time Window** for 5 seconds then hides **Time Window**

3.3.3.1 File Window

File window: play various files like documents, pictures, video etc.

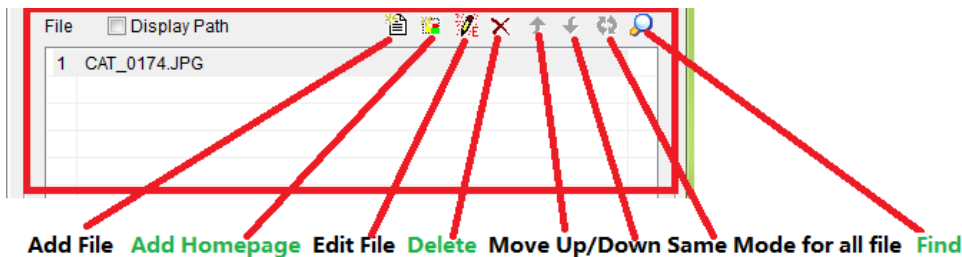


3.3.3.1.1 File(s) Showing Area Settings

File(s) Showing Area Settings: refers to [Important Notes](#)

3.3.3.1.2 File(s) Adding & Listing Window

Display Path: Showing the file path in the computer



Add File: click **Add File** icon to add a media file.

Add Homepage: add a web link to show web page in **Showing Area**

Edit File: edit the selected file. Open and edit

Delete: delete the selected file

Move Up/Down: move the selected file up/down

Same Mode for all file: make all files apply the same **Playing Settings**

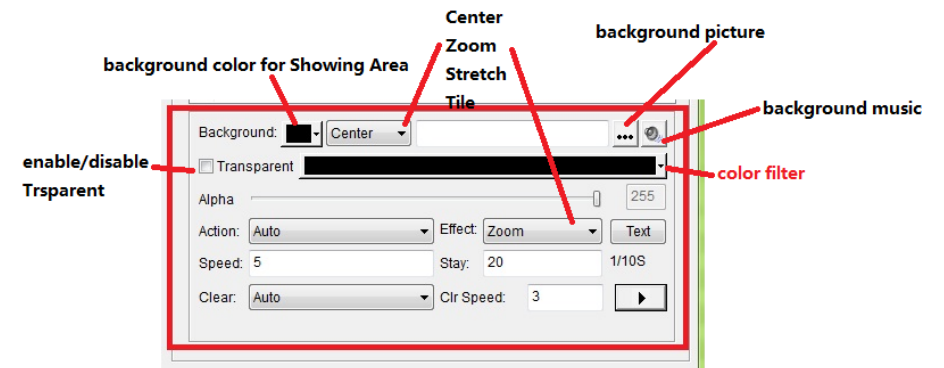
Find: find file(s) in the list

3.3.3.1.3 File Playing Settings

3.3.3.1.3.1 Photo Playing Settings

File Playing Settings: settings for the selected file in the **File(s) Adding & Listing Window**

Note: All the settings only effects on the selected file



The above **File Playing Settings** is for **Pictures**.

Background: background color of **Showing Area**

Center/Zoom/Stretch/Tile: effects for background picture

Background picture: background picture for **Showing Area**

Background music: background music when playing the selected file

Transparent: Enable Transparent. The selected color will be filtered.

Alpha: 0-255, 0 is 100% transparent, means the selected file will disappear from **Showing Area**, Showing Play Window Background or contents of below layer

Showing Area.

Action: how the pictures come in

Effect: zoom, stretch, center, tile

Text: add text

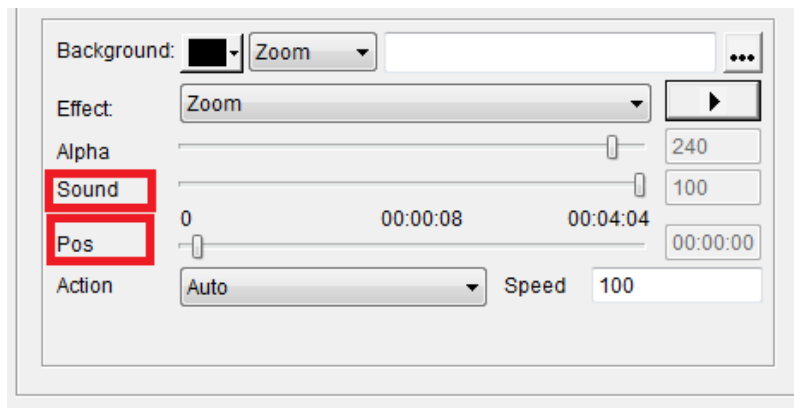
Speed: file coming in speed. The larger value, the slower speed

Stay: time duration for file to stay

Clear: how the file is cleared out

Clr speed: clear out speed. The larger value, the slower speed.

3.3.3.1.3.2 Video Playing Settings



Background: background color of Showing Area

Center/Zoom/Stretch/Tile: effects for background picture

Effect: the Center/Zoom/Stretch/Tile effect



: test play

Alpha: 0-255, 0 is 100% transparent, means the selected file will disappear from Showing Area, Showing Play Window Background or contents of below layer Showing Area.

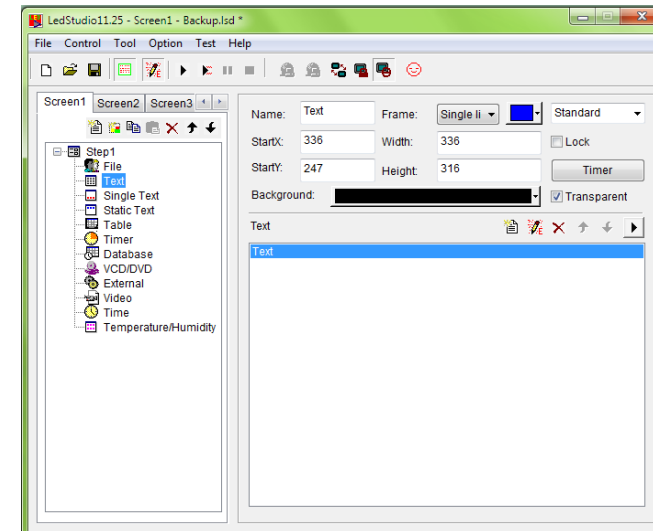
Sound: 0-100. Adjust the sound of the video

Pos: show current playing time of video

Action: how video come in

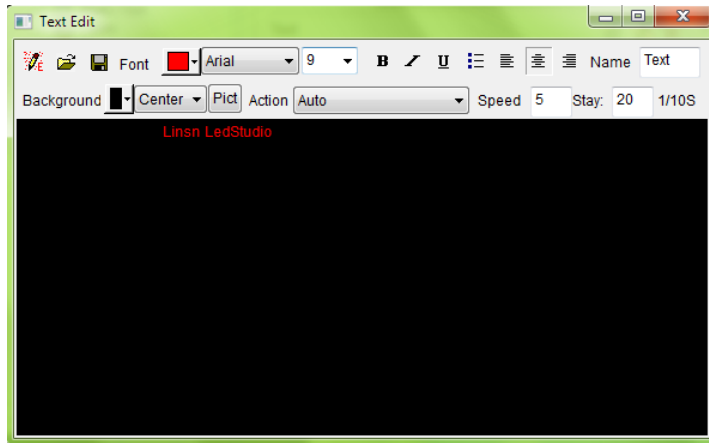
Speed: the coming in speed. The larger value, the slower speed


3.3.3.2 Text Window





Transparent: Transparent the Showing Area background color

Add Text



Edit  : show/hide the text window

Open  : open a .txt file

Save  : save as .txt file

Font settings: Font  Arial 9 **B**      

Name: default as Text

Background  Center  Action Auto Speed 5 Stay: 20 1/10S

Background color

Pict: picture, background picture.

Center/zoom/stretch/tile effects for background picture

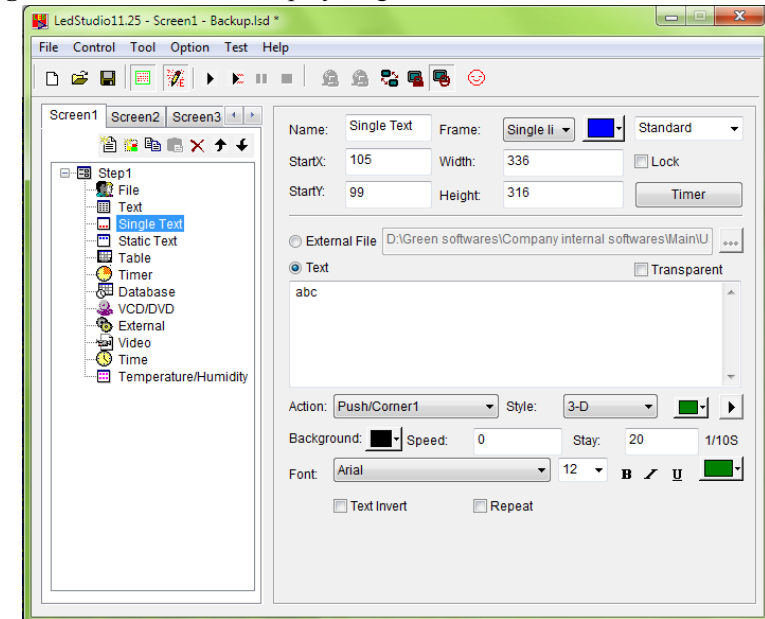
Action: action for background picture

Speed: background picture coming in speed. The larger value, the slower speed

Stay: time duration for background picture to stay

3. 3. 3 Single Line Text Window

Single line text window: to play single line text window



Transparent: only work when **Showing Area** background color is Black. Transparent the black color and show the **Step background color** instead.

External File: open a .txt file

Text: input text

Action: how the text comes in **Showing Area**

Style: add effects to the text. And the color for the effect.

 : test play

Background: background color for the text

Speed: Text coming in speed. The larger value, the slower speed

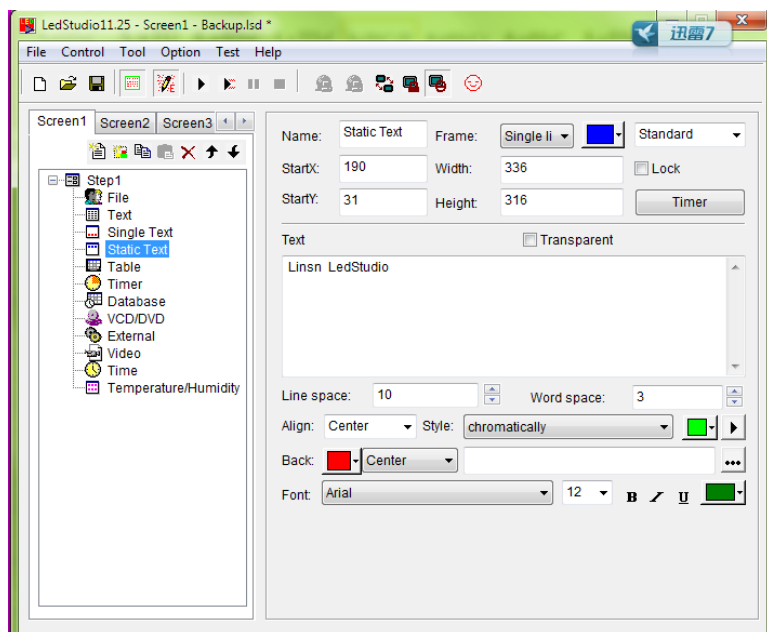
Stay: time duration for text to stay

Font: Font settings for text

Text invert: abc ---- cba

Repeat: abc---abcbcabcbcabcb

3.3.3.4 Static Text Window



Transparent: only work when **Showing Area background color** is Black.

Transparent the black color and show **Step background color** instead.

Text: text input

Line space: space of text lines

Word space: space of neighboring words

Align: left/center/right/left&right



Style: add text effects and color of effect



1: test play

Background:



Background color

...: add background picture

Center/zoom/stretch/tile for background picture

Font settings:



3.3.3.5 Table Window

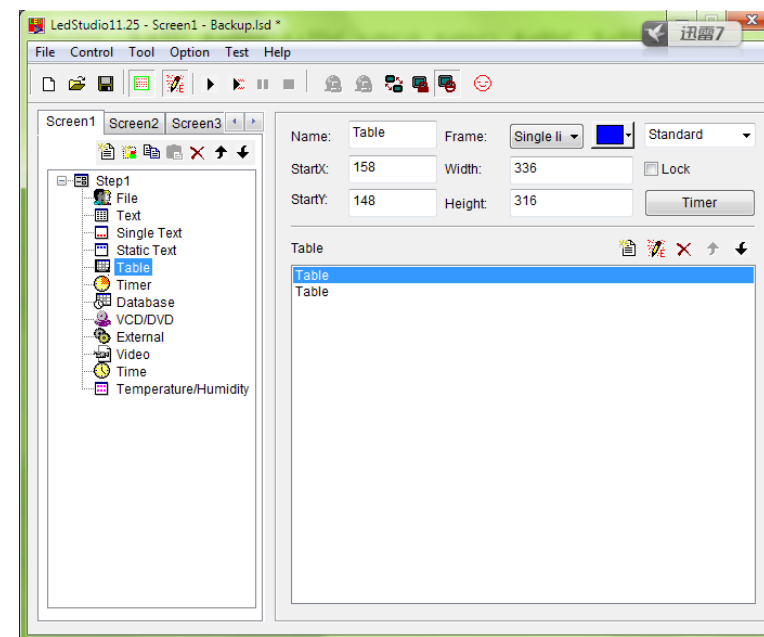


Table Window: Used to edit the play list data.

Add Table



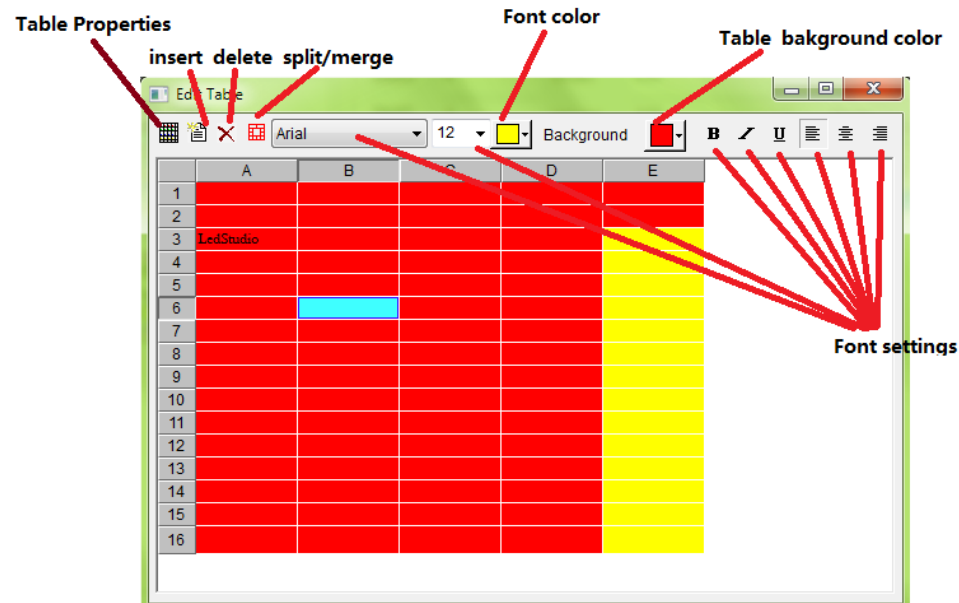
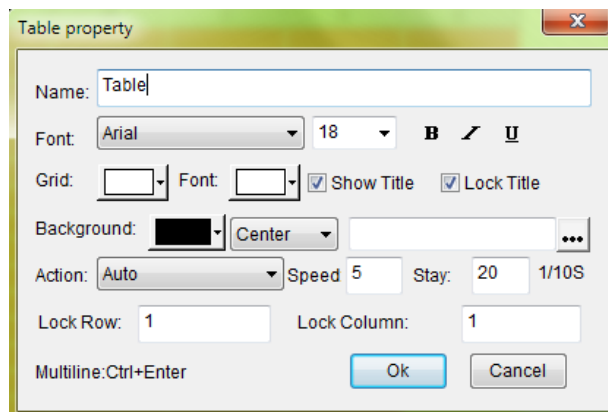


Table Properties:



Name: Title name of the table

Font settings: Title font settings

Grid: the table grid color

Font color: title font color

Show Title: Show/hide Title

Lock title: when title is locked. Title stays still while Action effect taking place.

Action: table effects

Speed: table coming in speed. The larger value, the slower speed

Stay: time duration for table to stay

Lock row: for example, Lock Row 2, the second row will stay. This only works in Up/Down Action effects.

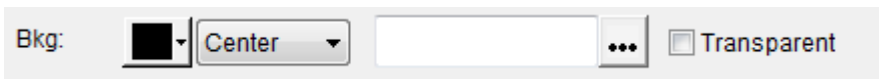
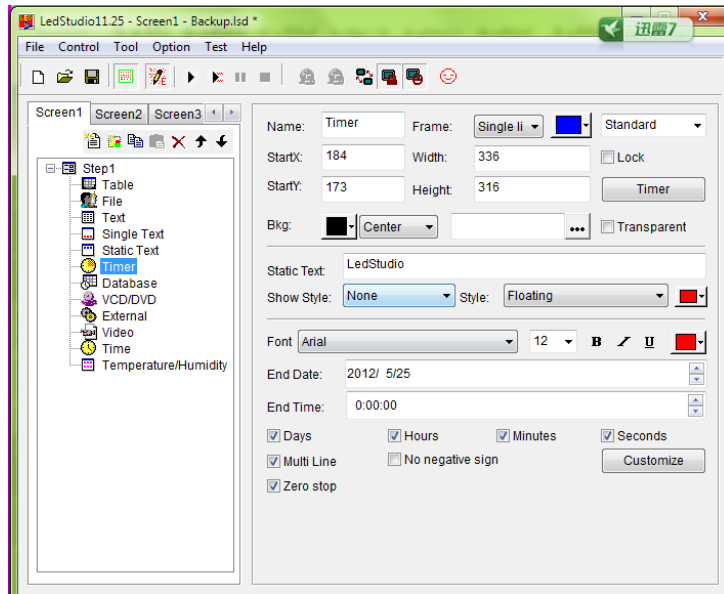
Lock Column: for example, Lock Column 2, the second column will stay. This only works in Left/Right Action effects.

Ctrl+Enter: start a new line within a single table

	A	B	
1			
2	abc cde		
3			
4			
5			

3.3.3.6 Timer Window

Timer window: Used for countdown



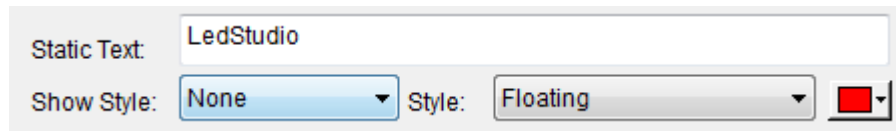
Bkg: background color for Timer

Center/zoom/stretch/tile for background picture

...: background picture for Timer

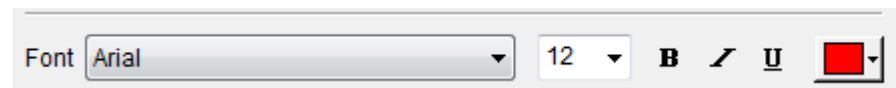
Transparent: only work when **Showing Area background color** is Black.

Transparent the black color and show **Step background color** instead.

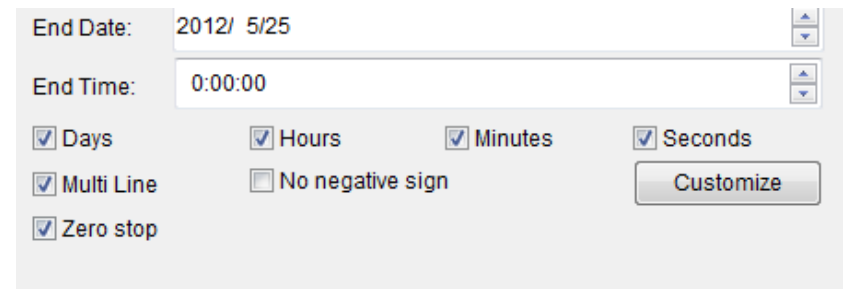


Static Text: text input

Style: add effects to text and color for effect



Font settings for Text.



End Date: Date for timer to countdown to

End Time: Time for timer to countdown to

Days/Hours/Minutes/Seconds: show/hide when countdown

Multi Line: enable or disable multi line showing

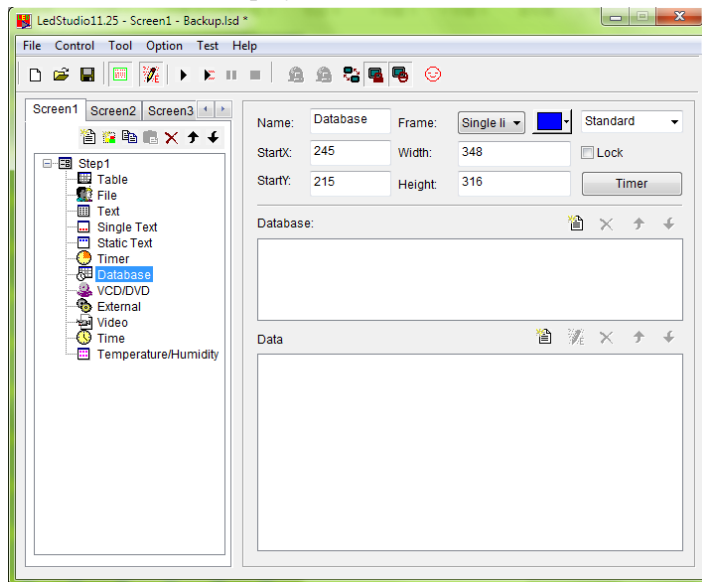
No negative sign: when countdown pass the End Time, do not show the – in the timer.

Zero stop: stop when Timer finish countdown

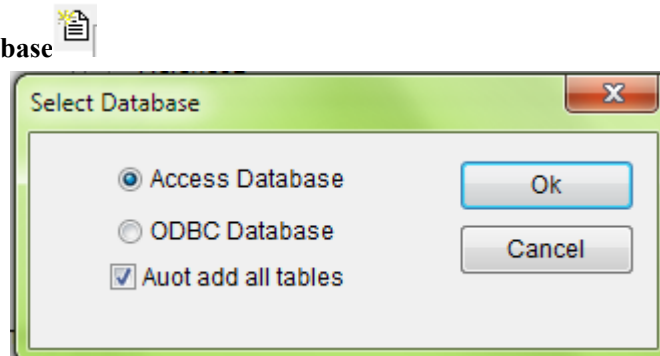
Customize: customize the time format for countdown

3. 3. 3. 7 Database Window

Database window: Used to play ACCESS database and ODVC driver data base.



Add Database



Set Table

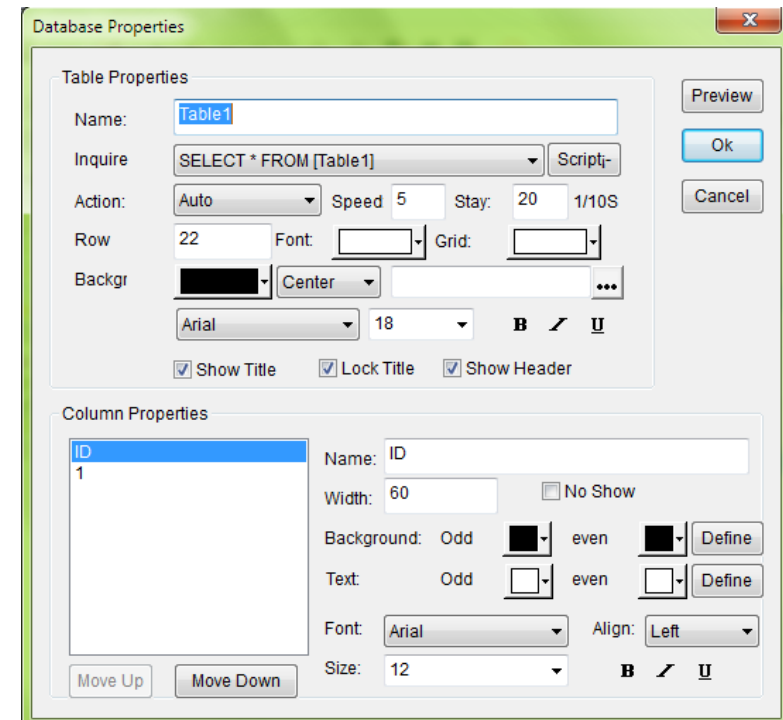
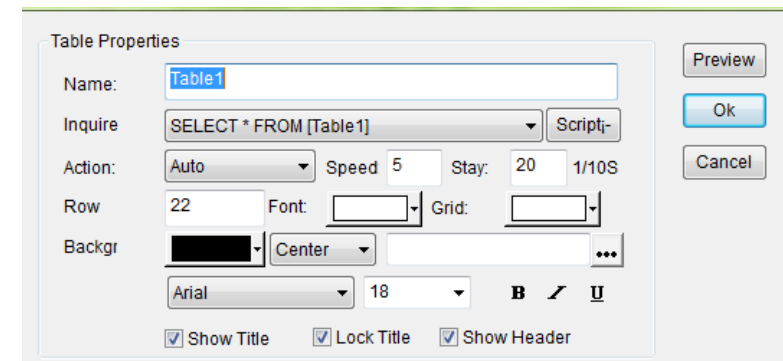


Table Properties



Inquire: read which part of the Database

Scripti-: Scripting

Action: effects for how the table comes in **Showing Area**

Speed: table coming-in speed. The larger value, the slower speed

Stay: time duration for table to stay

Row (in pixels): the height for a row

Font: Table1 color

Grid: table grid color

Backgr: background color of table

...: add background picture for table


Center/zoom/stretch/tile for background picture

Font settings for Table1: 

Show title: hide/show Table title

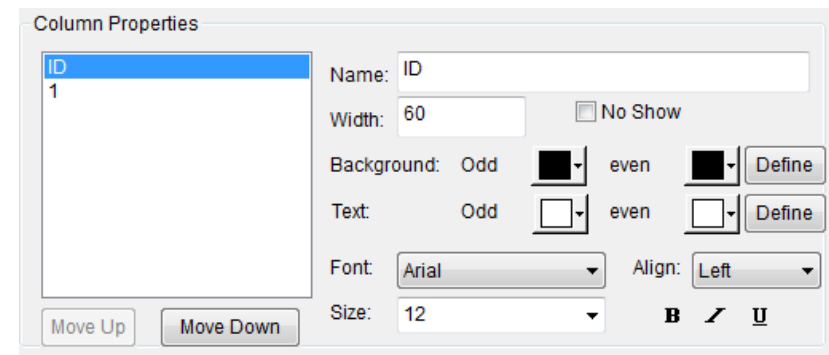
Lock title: when title is locked. Title stays still while Action effect taking place.

Show header: show/hide the **Column** header



ID	1
1	LedStu

Column Properties





Column Properties



ID

1

Name: ID

Width: 60 ☐ No Show

Background: Odd  even  Define

Text: Odd  even  Define

Font: Arial Align: Left

Size: 12 **B** */*

Move Up Move Down

Name: column name

Width: column width in pixels

No Show: hide the selected column



Background: Odd  even  Define

Text: Odd  even  Define

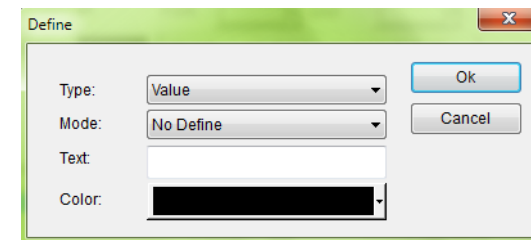
Background odd: background color of column header

Background even: background color of column data

Text odd: column header font color

Text even: column data font color

Define: define a rule to apply color

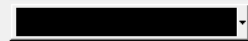


Define

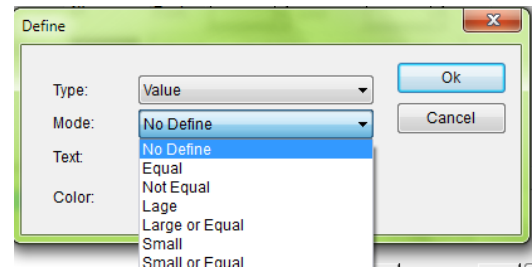
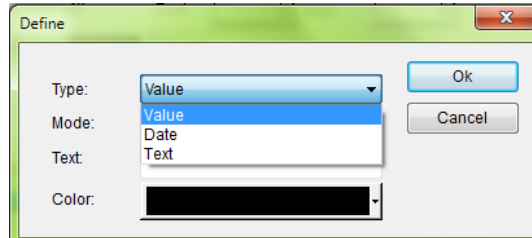
Type: Value

Mode: No Define

Text:

Color: 

Ok Cancel

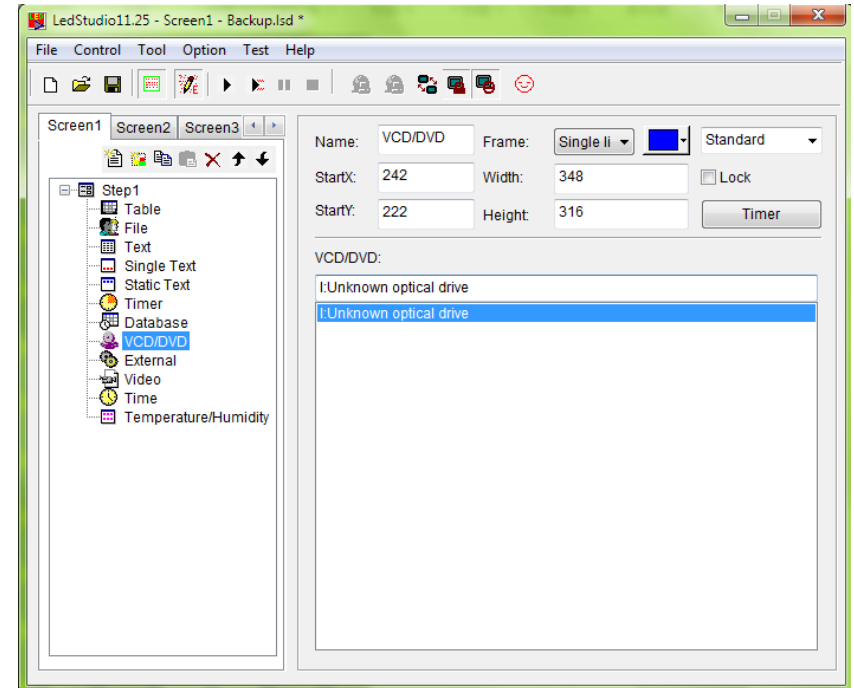


Font settings of selected column:



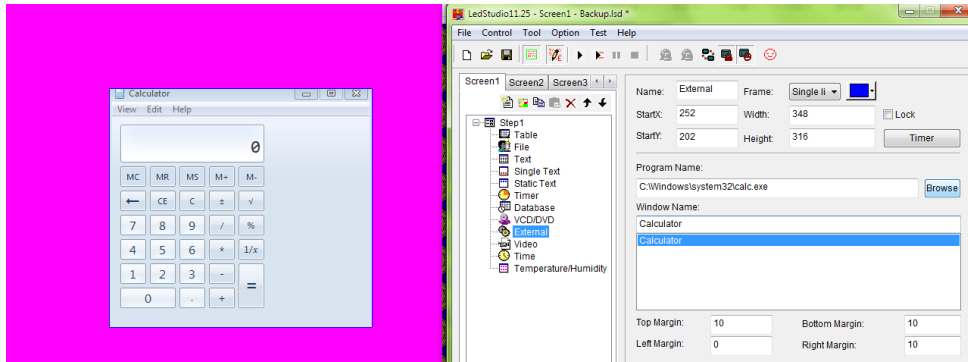
3.3.3.8 VCD/DVD Window

DVD/VCD window: play DVD/VCD in Showing Area



3.3.3.9 External Exe Window

External Program Window: run a .exe program inside Play Window



Browse: browse to select an .exe program

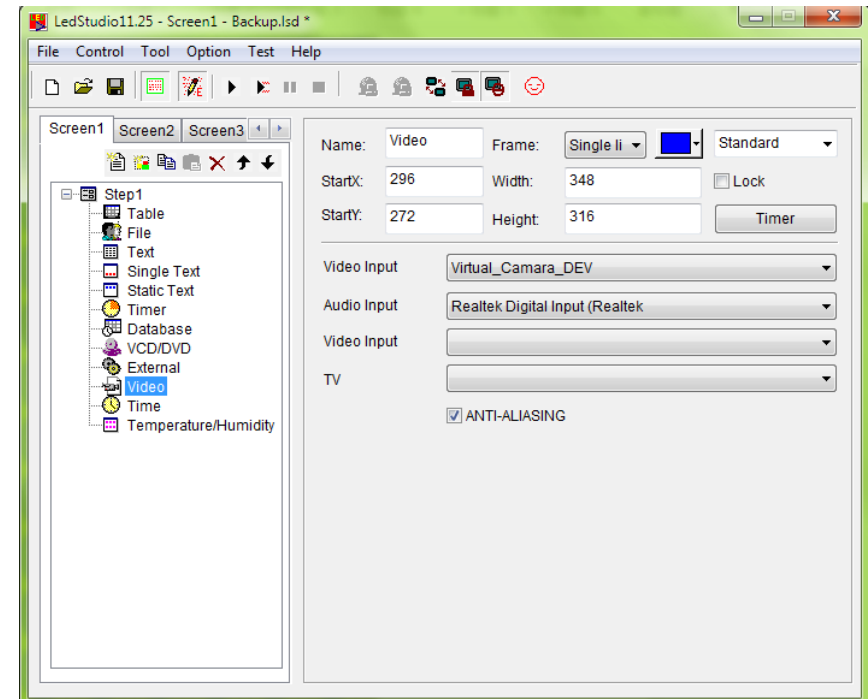
Window Name: Select a .exe listed to run in Play Window

Top/Bottom/Left/Right Margin: set the position of the .exe program

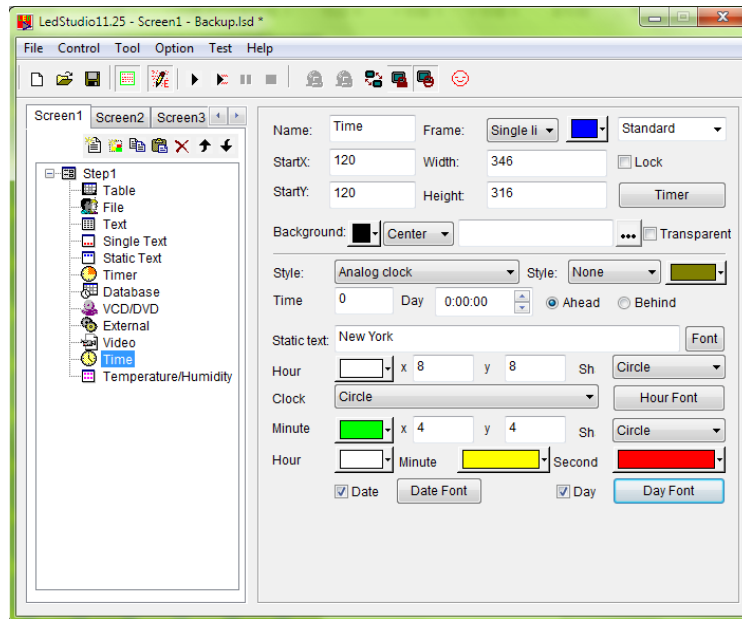
3.3.3.10 Video Window

Video Window: Read Video/audio source from capture card and show on Play Window

LedStudio will detect what video/audio sources are available from the computer. Select a source and show on Play Window.



3.3.3.11 Date/Time Window



Background color for Time

Center/zoom/stretch/tile for background picture

...: background picture for Timer

Transparent: only work when **Showing Area background color** is Black.

Transparent the black color and show **Step background color** instead.



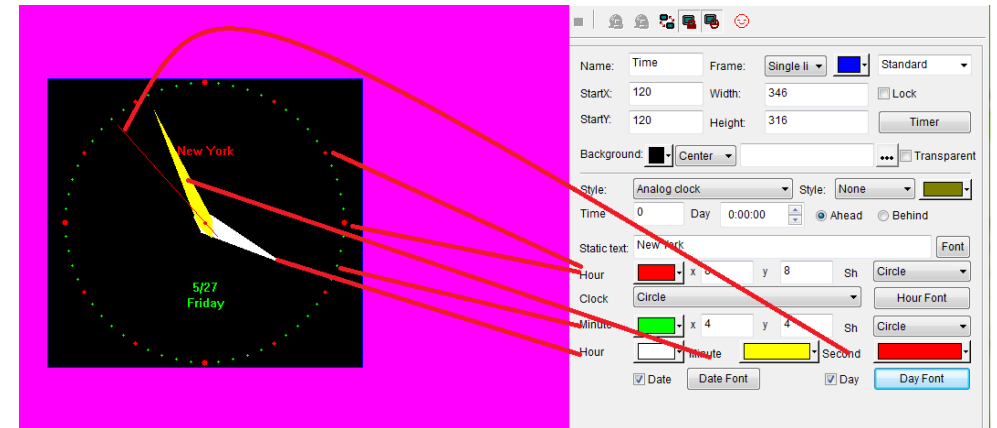
Style: Time style

Style: effects for Time (not for Analog clock) and effect color



Static text: text show together with Time

Font: font settings for static text



Time Day Ahead/Behind: adjust the Time Ahead or Behind computer time

Hour X, Y: width and height for Hour

Minute X, Y: width and height for Minute

SH: shape

Clock: shapes for Analog clock

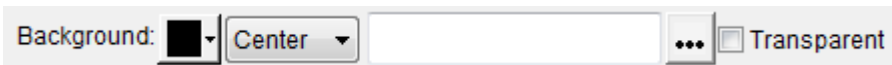
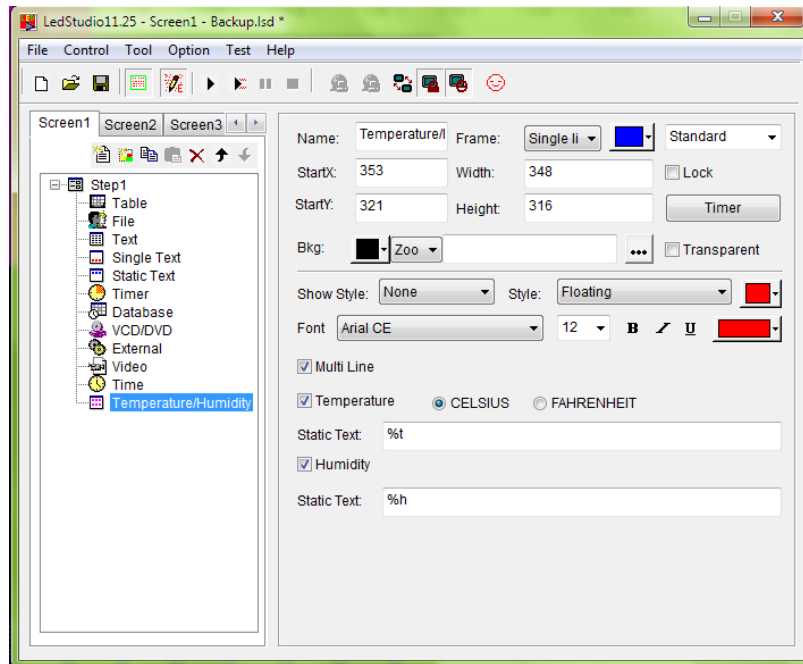
Hour Font: font setting when SH (shape) is Digit

Date/Day: show/hide Date/Day

Date Font/Day Font: font settings

3. 3. 3. 12 Temperature/Humidity Window

Temperature/Humidity window: this is used to display temperature and humidity.



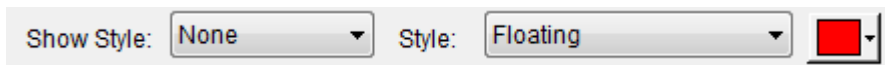
Background color for Temperature/Humidity

Center/zoom/stretch/tile for background picture

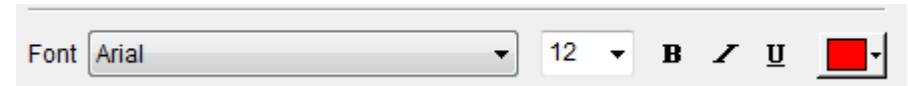
...: background picture for Temperature/Humidity

Transparent: only work when **Showing Area background color** is Black.

Transparent the black color and show **Step background color** instead.

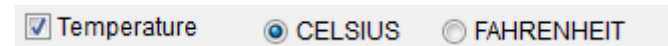


Style: add effects to text and color for effect

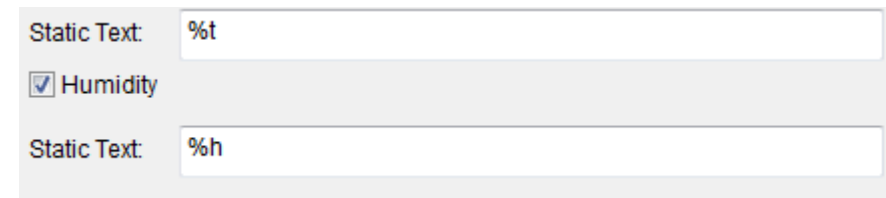


Font settings for Text.

Multi-line: show between multi-line and single line



Show temperature in different unit



Add text before/after Temperature/Humidity Value

3. 3. 3. 13 Copy Window

StartX, StartY: set position of Copy Window

Width, Height: set size of Copy Window


Frame Extracting: for example: Per 10 extracting 5 pixels means in every 10 pixels, extract the last 5 pixels.

3. 4. 4 Save Program

After Click on the saving button  or select File Menu, save.

3. 4. 5 Play Program

To play current program files, click the button  to start;  to pause;  to stop, or select from Control Menu.

To play a saved .lsd program file, click Open button .

END.